

Citizen Task Force

Monday, March 18, 2024



Welcome!

Ben Collins
Superintendent
Park Ridge-Niles School District 64





Purpose

District 64 is considering placing a bond referendum on the November 2024 ballot to address high-priority capital facility needs at each of our elementary and middle schools. We seek your thoughts and recommendations regarding:

1. Size and composition of the proposal
2. Messaging (for and against)
3. Other likely information needs

Agenda

- Introduction to District 64
- Planning efforts
- Capital facility needs
- Proposed solutions
- Public engagement timeline
- Breakout groups
- Final recommendations
- Next steps

Introduction to D64

Ben Collins
Superintendent
Park Ridge-Niles School District 64



STUDENTS

➤ 4,619 students

- White - 80%
- Hispanic - 9%
- Asian - 6%
- Black - 1%
- Multiracial - 4%

- Low income - 4%
- With IEPs - 12%
- English Learners - 8%
- 34 Languages Spoken at Home

Source: Illinois State Report Card

STAFF

➤ 431 Certified staff

- 29 administrators
- 184 Non-certified staff
- 14:1 Teacher/Student Ratio
- 20.4 Average Class Size
- 70% hold at least a Masters

SCHOOLS

➤ 8 schools

- Early Childhood Center - 1
- Elementary Schools – 5
- Middle Schools – 2
- 693,000+ sq ft
- \$224.6 Million Total Value
- \$525 Million Total Rebuild

COMMUNITIES SERVED

➤ *Park Ridge*

➤ *Niles*



PARK RIDGE-NILES
SCHOOL DISTRICT 64

Points of Pride

- Blue Ribbon Schools
 - Washington Elementary School – 2018
 - Lincoln Middle School – 2006 & 2021
- Channels of Challenge Program
- Roosevelt has won 5 consecutive National Kindness Awards
- Full-Day Kindergarten
- Students attend Harvard, Yale, Northwestern, MIT, Illinois, Michigan, etc.
- AA+ Bond Rating and Highest ISBE Financial Distinction
- One of the largest St. Baldrick's Fundraisers in the U.S.

History of Buildings & Referenda



Built In 1928



Built In 1953



Built In 1950



Built In 1956



Bond Referendum In 1997

Funded Building
New Emerson Building



Built In 1998



Our Last Referendum Was In 2007

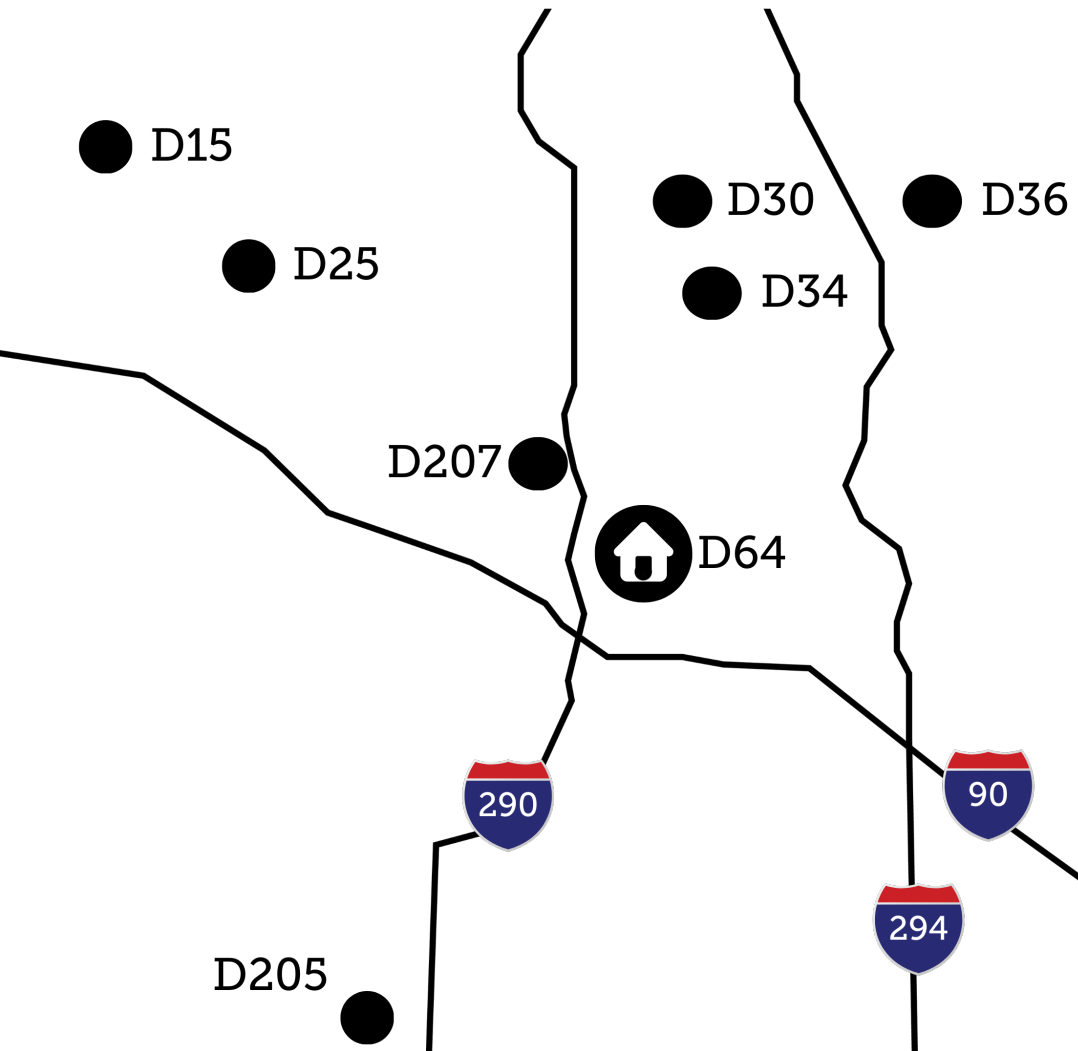
Tax Rate Referendum To Restore
Class Sizes & Programs,
& Create A Fund Balance



Fully Renovated In 2022



Successful Referenda Near Us



- D207-Maine Township-\$195M
- D205-Elmhurst-\$168.5M
- D34-Glenview-\$119M
- D15-Palatine-\$93M
- D25-Arlington Heights-\$75M
- D36-Winnetka-\$59.4M
- D30-Northbrook-Glenview-\$36.3M

Planning Efforts

Ben Collins
Superintendent
Park Ridge-Niles School District 64



Planning Efforts Completed to Date

- **October-Present Revised Master Facilities Planning**
 - Building surveys and studies
 - Staff meetings
 - Architect & Engineering Renderings
 - Frequent school board presentations
 - Community Presentations
- **\$10 Million Bond for Lincoln Renovation (1st phase) approved in January**
- **Ongoing Financial Forecasting**



Capital Facility Needs

Ben Collins
Superintendent
Park Ridge-Niles School District 64



Overview of Capital Facility Needs

Health, Safety, & Security Upgrades

- ⊕ Interior Doors and Frames
- ⊕ Exterior Fencing and Railings
- ⊕ HVAC Systems
- ⊕ Asbestos Abatement

Mechanical/Infrastructure Improvements

- ✂ Foundations
- ✂ Roofs and Gutters
- ✂ Lighting
- ✂ Plumbing
- ✂ Electrical Systems

Classroom Modernization

- 🎓 Updated Science Labs
- 🎓 New Cafeteria/Commons At Lincoln
- 🎓 Band, Orchestra, Choir Rooms
- 🎓 Special Education Spaces



Facility Needs



	LINCOLN	EMERSON	CARPENTER	FIELD	FRANKLIN	ROOSEVELT	WASHINGTON
Health, Safety, and Security Upgrades							
Interior Doors and Frames	●	●	●	●	●	●	●
Exterior Fencing and Railings	●	●	●	●	●	●	●
HVAC Systems	●	●		●	●	●	●
Asbestos Abatement	●		●	●	●	●	●
Mechanical and Infrastructure Improvements							
Foundations	●	●	●	●		●	
Roofs and Gutters	●	●	●	●	●	●	●
Lighting	●	●		●		●	●
Plumbing	●	●	●	●	●	●	●
Electrical Systems	●	●			●	●	●
Classroom Modernization							
Updated Science Labs	●	●					
New Cafeteria/Commons	●						
Band, Choir, Orchestra Rooms	●	●					
Special Education Spaces	●	●	●	●	●		●





A Look at Lincoln

D64 Facilities Tour

Lincoln Middle
School



PARK RIDGE-NILES
SCHOOL DISTRICT 64



Emerson Middle School

Band, Orchestra,
Choir rooms are too
small



Foundation issue at
gym entrance





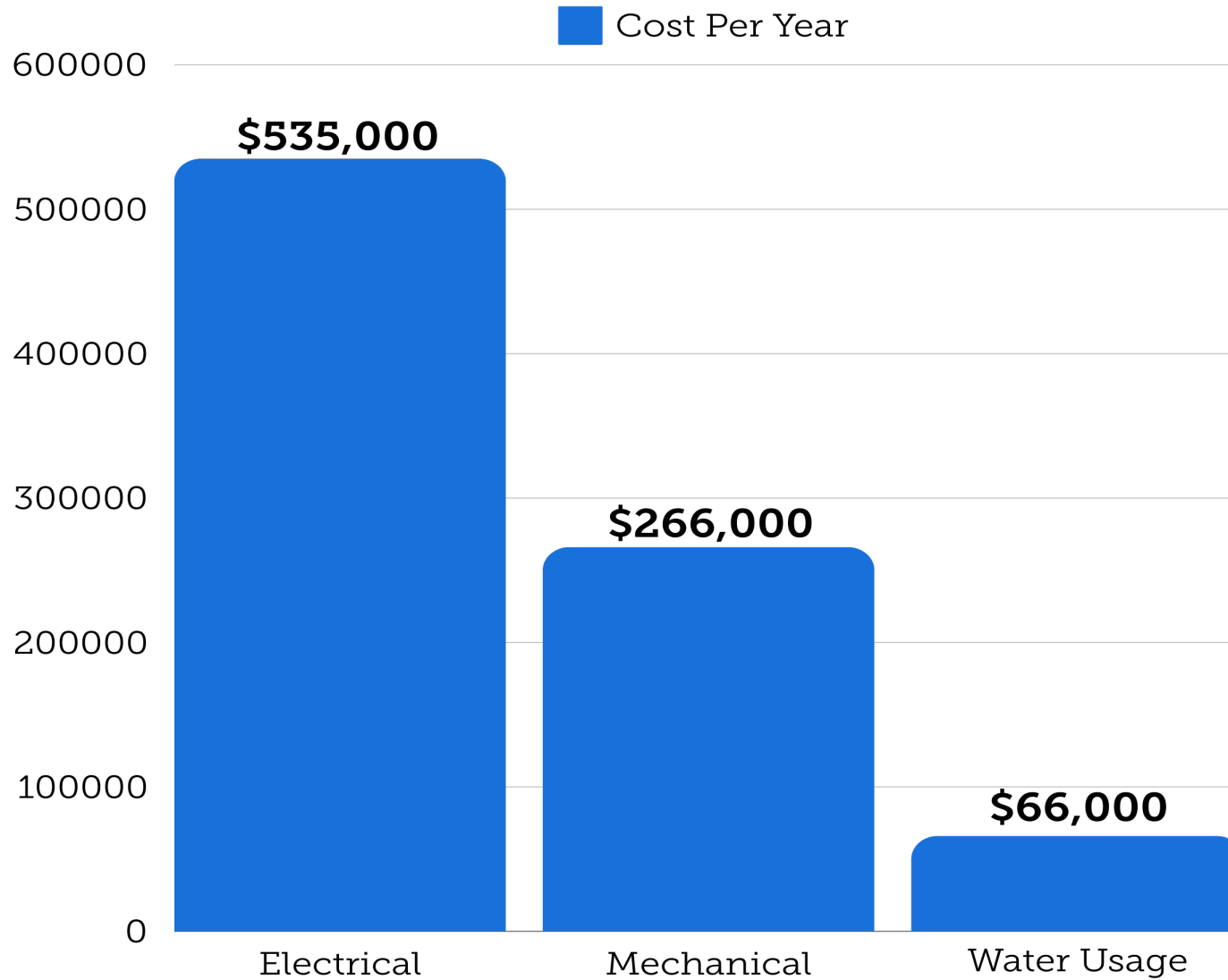
Emerson Middle School



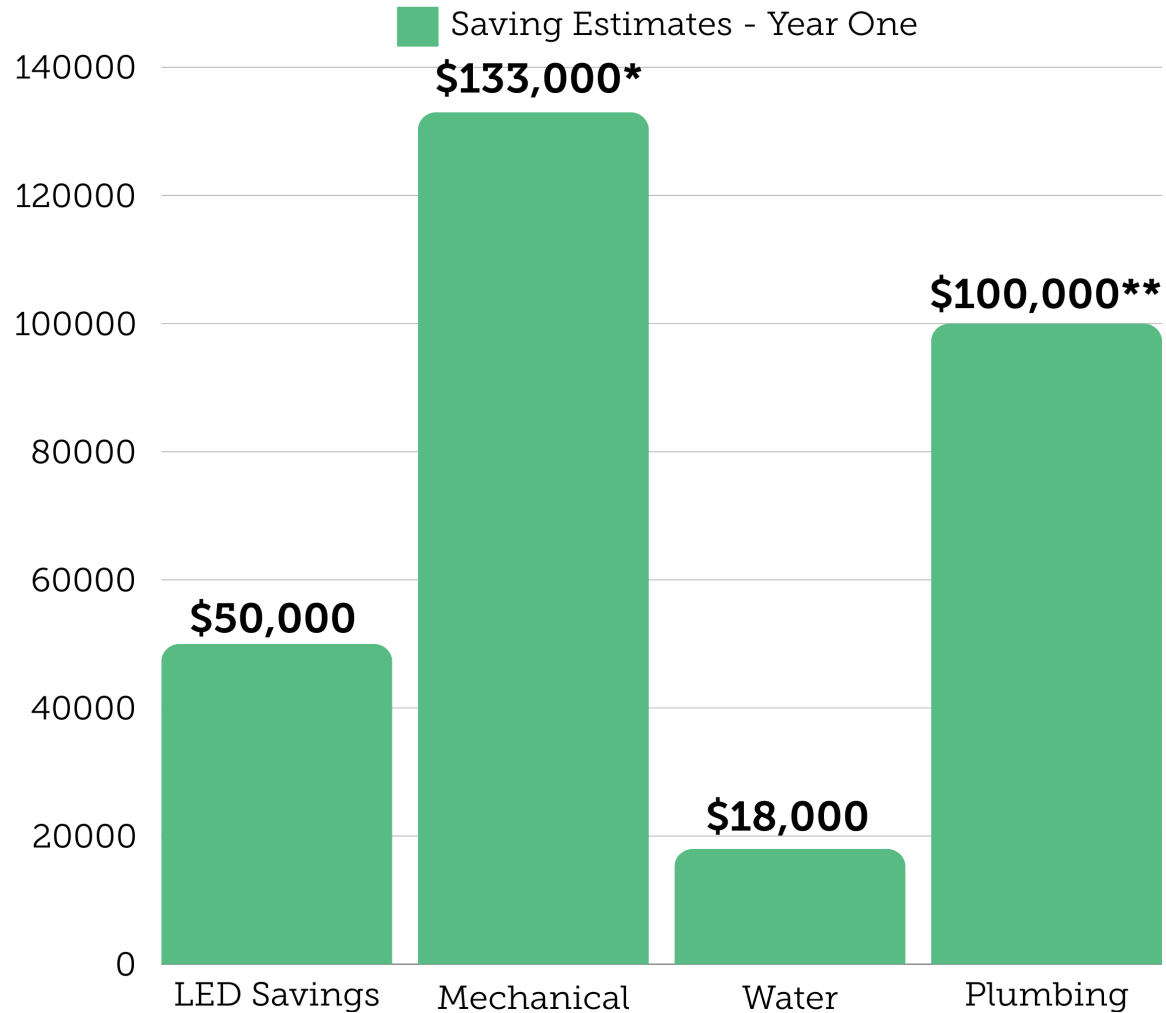
Crowded and poorly configured
Special Education rooms



Cost of Maintaining Current Facilities



Savings Estimates



***Based on new HVAC systems for Lincoln, Emerson, and Roosevelt**

****Based on failing plumbing and 5-year plan highly recommended items**



**PARK RIDGE-NILES
SCHOOL DISTRICT 64**

Proposed Solutions

Dr. Ben Collins
Superintendent
Park Ridge-Niles School District 64

Dr. Adam Parisi
Chief School Business Official
Park Ridge-Niles School District 64

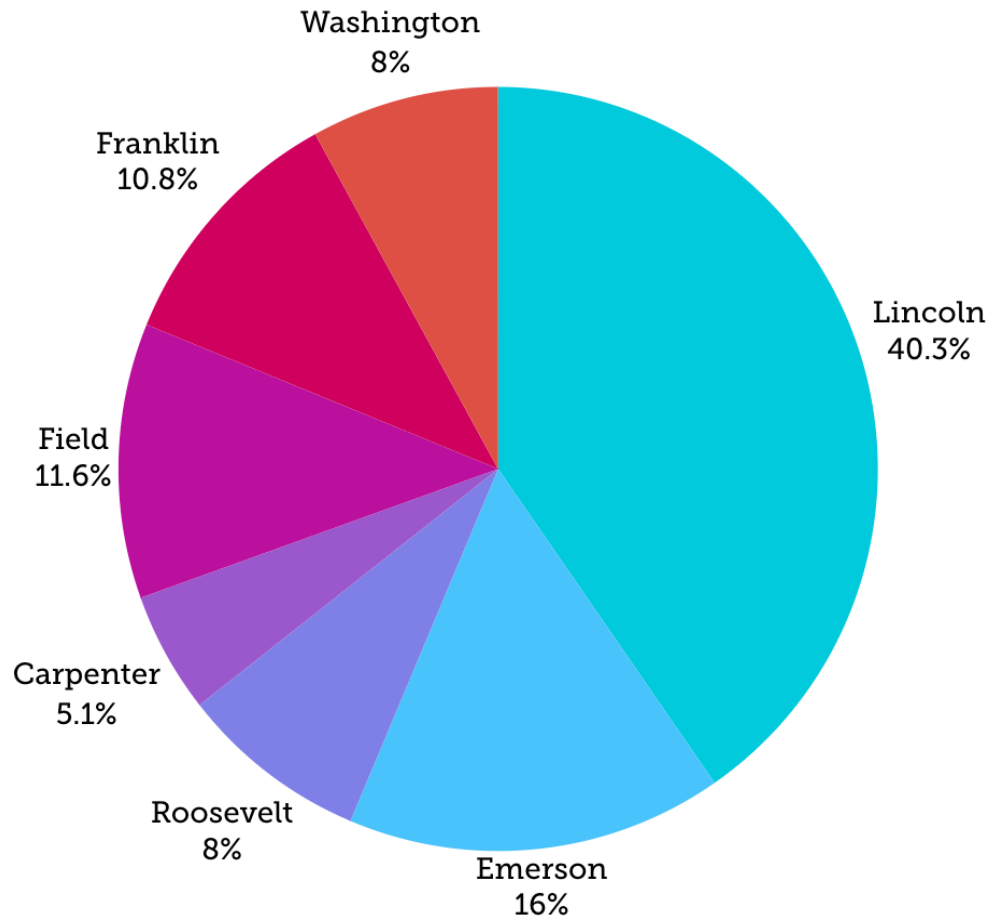
Mr. Noel Mendoza
Director of Facilities
Park Ridge-Niles School District 64

George Gauthier, AIA, LEED AP
Project Manager
Wight & Company

Elizabeth Hennessy
Managing Director
Raymond James



Current Recommendations



Health, Safety & Security Upgrades

\$17.01 Million

Mechanical/Infrastructure Improvements

\$25.9 Million

Classroom Modernization

\$53.39 Million

Total

\$98.36 Million

Updated Middle Schools Near Us

**Northbrook-Glenview School District 30
Maple Middle School**



**Glenview School District 34
Springman Middle School**





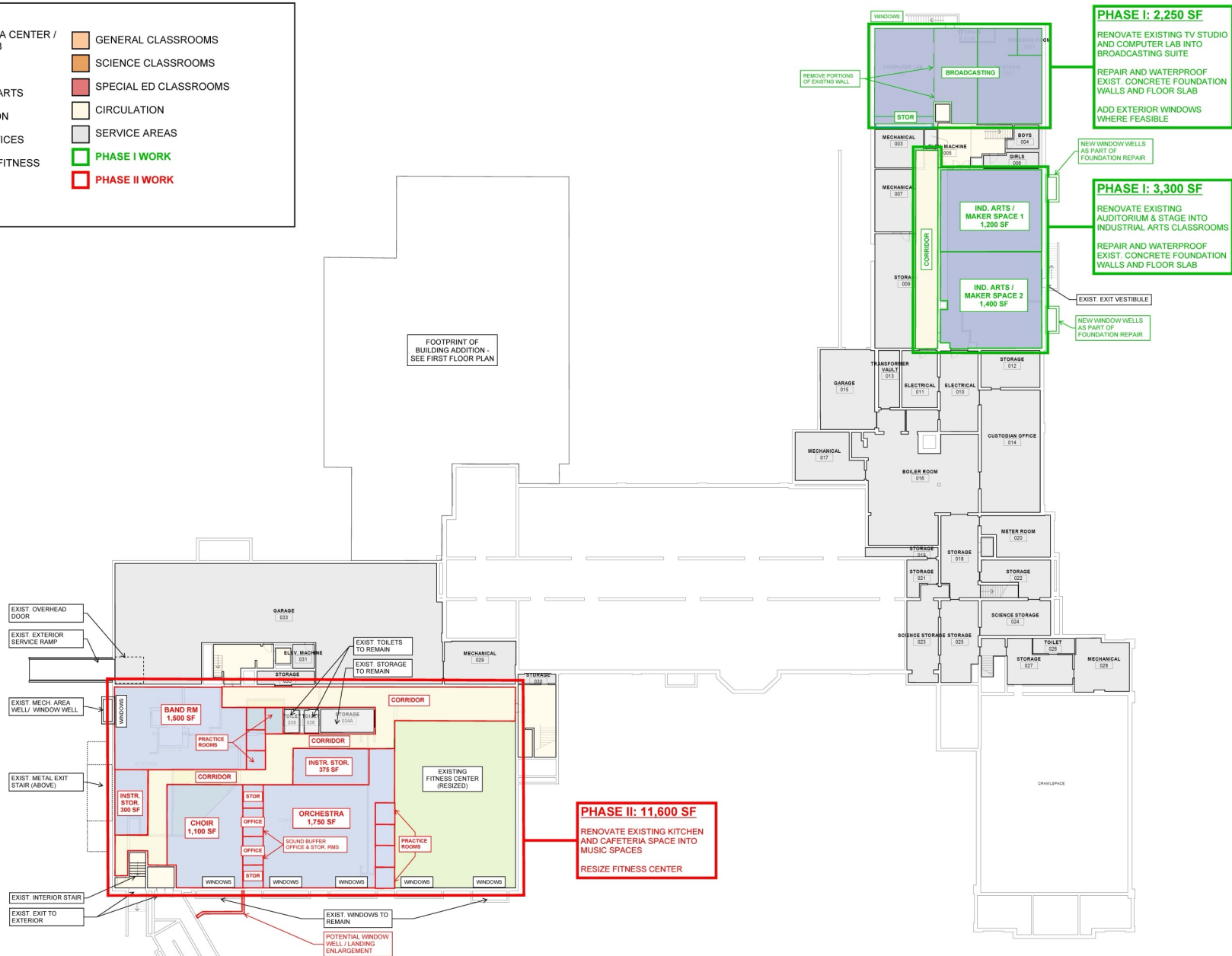
Lincoln Middle School

- **Health, Safety & Security Upgrades**
 - All interior doors & frames
 - HVAC System
 - Abate all asbestos across building
- **Modern Classrooms Upgrades**
 - All science labs & classrooms
 - Build cafeteria/performance space at Lincoln on 1st floor
 - New band, choir, orchestra rooms
 - New special education rooms
 - New office space for Social Workers, Psychologists, Speech Pathologists
 - Modern furniture & technology
- **Mechanical/Infrastructure Improvements**
 - Fix Foundation issues in lower level
 - Replace roof and gutters
 - LED lighting system
 - Plumbing system
 - Fix ADA bathroom issues
 - All flooring





LEGEND			
	LIBRARY / MEDIA CENTER / COMPUTER LAB		GENERAL CLASSROOMS
	MUSIC & ART		SCIENCE CLASSROOMS
	CTE / APPLIED ARTS		SPECIAL ED CLASSROOMS
	ADMINISTRATION		CIRCULATION
	STUDENT SERVICES		SERVICE AREAS
	GYMNASIUM & FITNESS		PHASE I WORK
	FOOD SERVICE		PHASE II WORK
	SMALL GROUP		



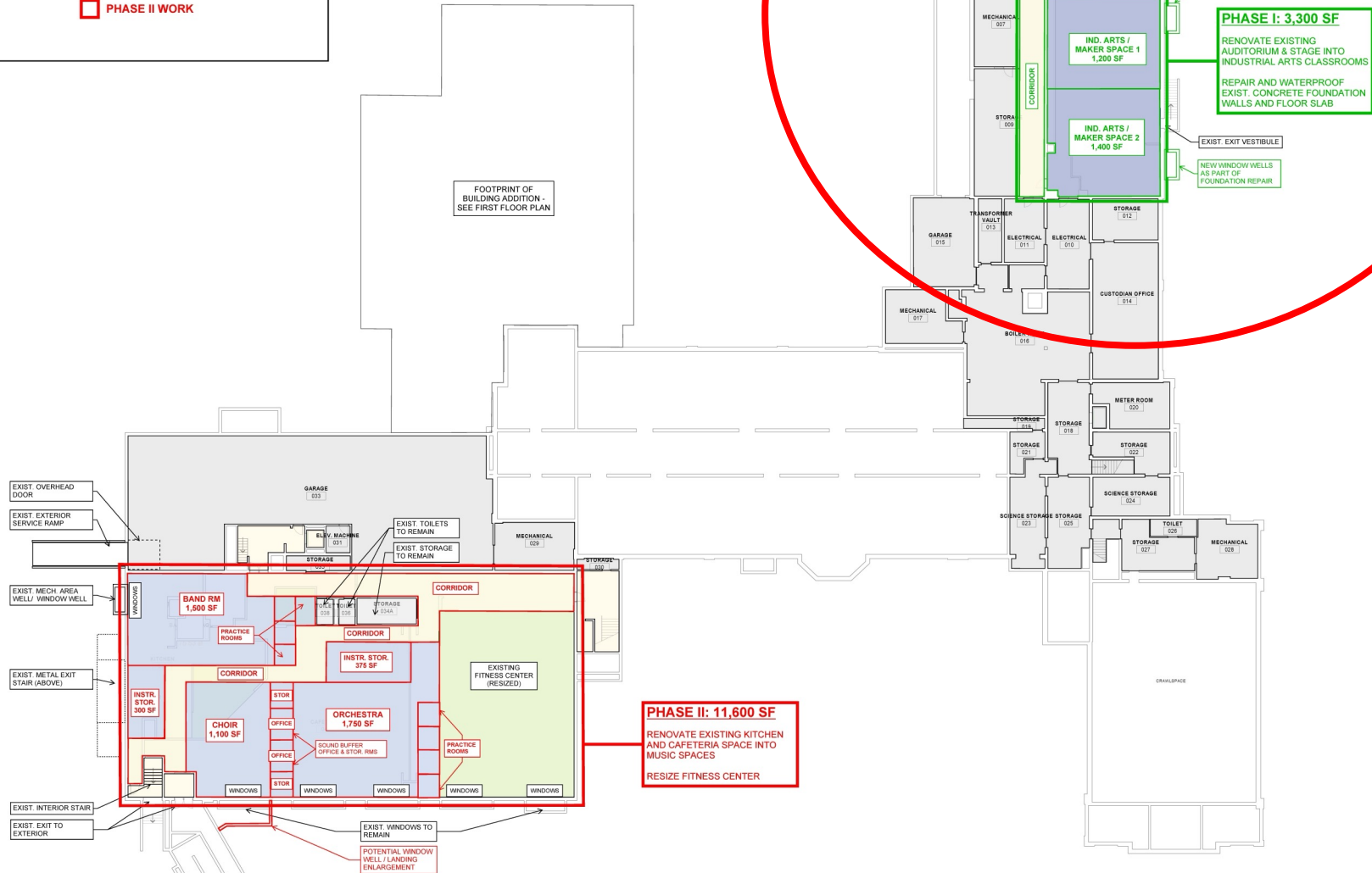
LINCOLN MIDDLE SCHOOL

LOWER LEVEL FLOOR PLAN
03/06/2024



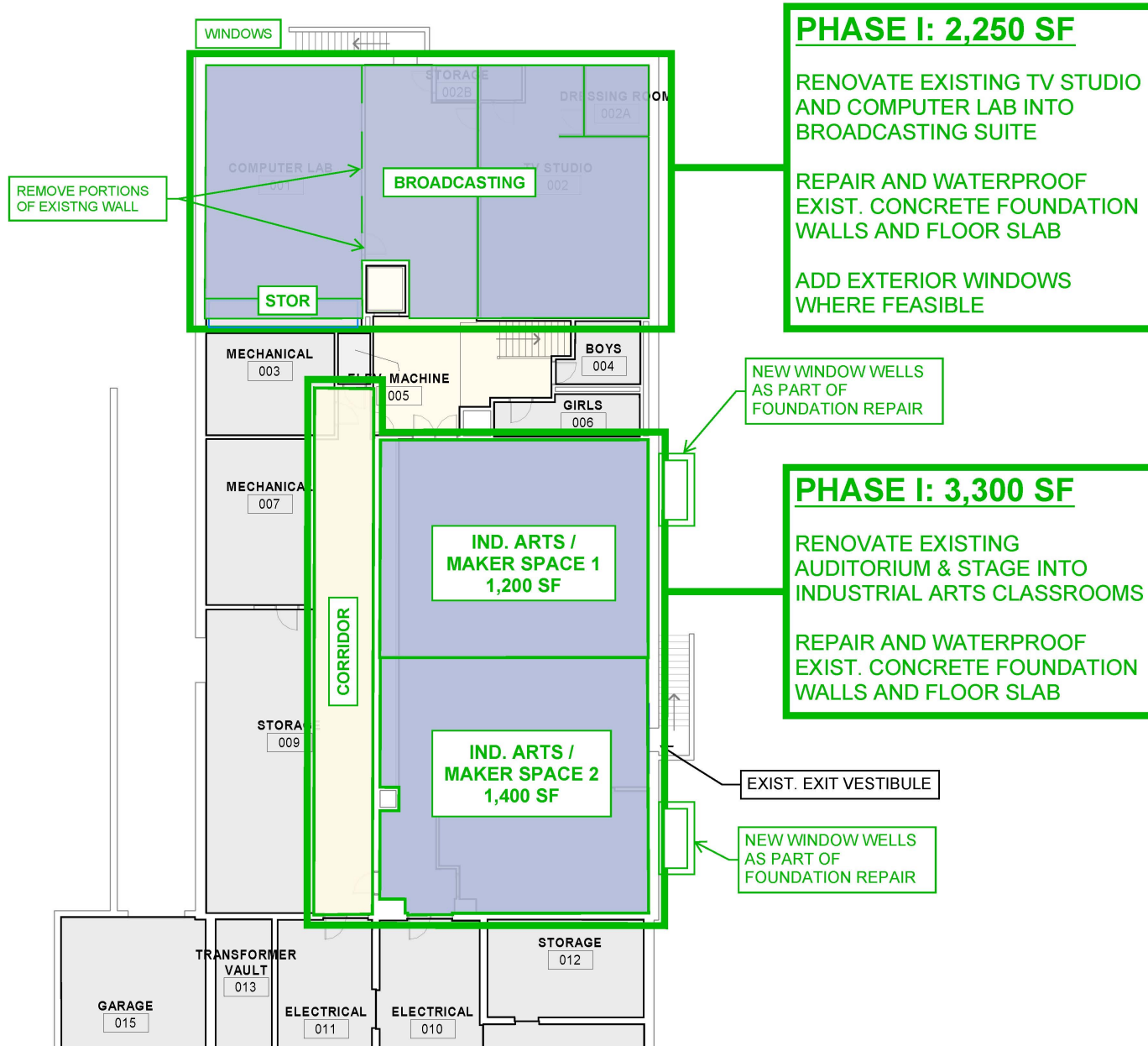


LEGEND			
	LIBRARY / MEDIA CENTER / COMPUTER LAB		GENERAL CLASSROOMS
	MUSIC & ART		SCIENCE CLASSROOMS
	CTE / APPLIED ARTS		SPECIAL ED CLASSROOMS
	ADMINISTRATION		CIRCULATION
	STUDENT SERVICES		SERVICE AREAS
	GYMNASIUM & FITNESS		PHASE I WORK
	FOOD SERVICE		PHASE II WORK
	SMALL GROUP		



LINCOLN MIDDLE SCHOOL





Technology Space

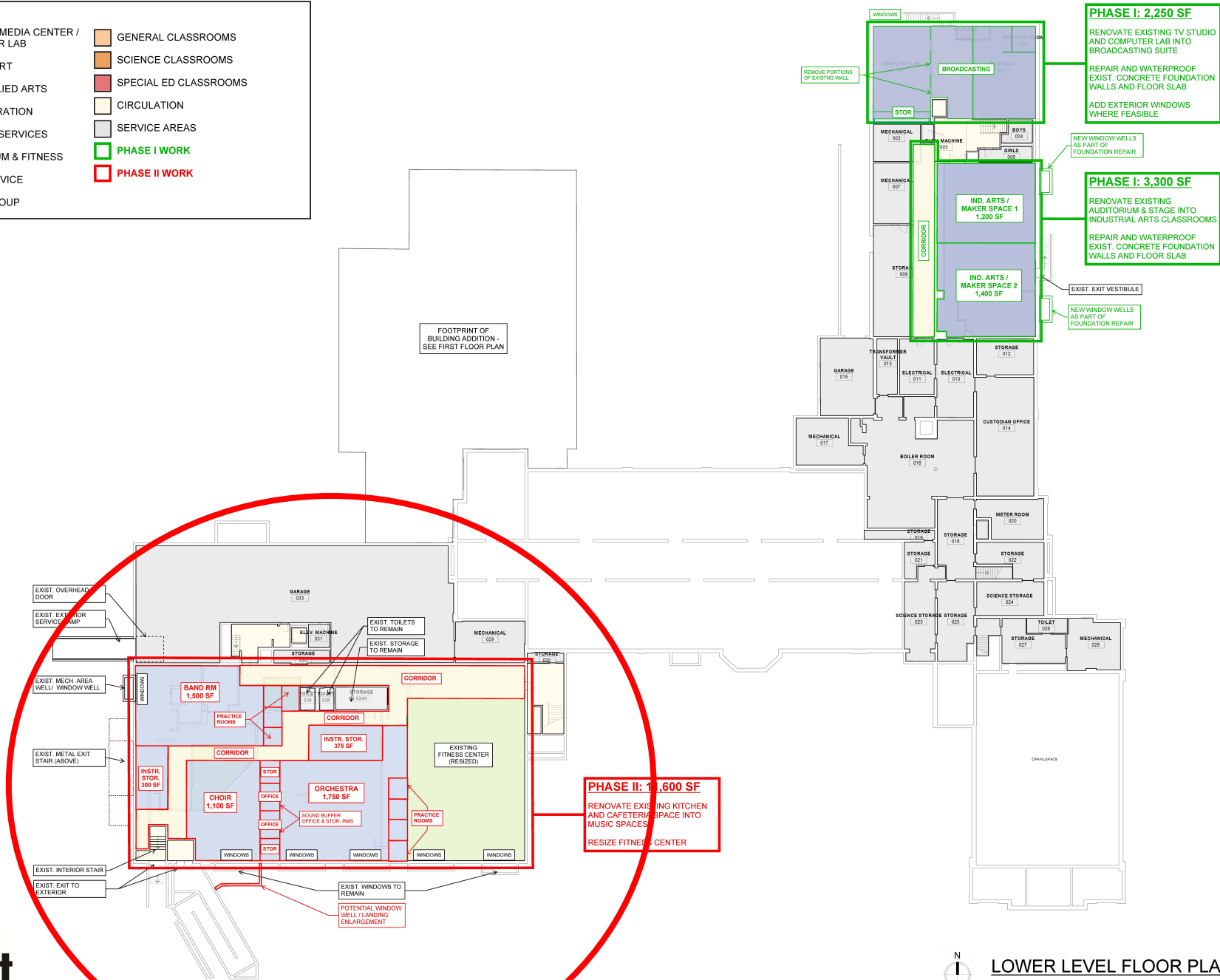


Technology Space





LEGEND			
	LIBRARY / MEDIA CENTER / COMPUTER LAB		GENERAL CLASSROOMS
	MUSIC & ART		SCIENCE CLASSROOMS
	CTE / APPLIED ARTS		SPECIAL ED CLASSROOMS
	ADMINISTRATION		CIRCULATION
	STUDENT SERVICES		SERVICE AREAS
	GYMNASIUM & FITNESS		PHASE I WORK
	FOOD SERVICE		PHASE II WORK
	SMALL GROUP		



PHASE I: 2,250 SF
 RENOVATE EXISTING TV STUDIO AND COMPUTER LAB INTO BROADCASTING SUITE
 REPAIR AND WATERPROOF EXIST. CONCRETE FOUNDATION WALLS AND FLOOR SLAB
 ADD EXTERIOR WINDOWS WHERE FEASIBLE

PHASE I: 3,300 SF
 RENOVATE EXISTING AUDITORIUM & STAGE INTO INDUSTRIAL ARTS CLASSROOMS
 REPAIR AND WATERPROOF EXIST. CONCRETE FOUNDATION WALLS AND FLOOR SLAB
 EXIST. EXIT VESTIBULE
 NEW WINDOW WELLS AS PART OF FOUNDATION REPAIR

PHASE II: 1,600 SF
 RENOVATE EXISTING KITCHEN AND CAFETERIA SPACE INTO MUSIC SPACES
 RESIZE FITNESS CENTER

FOOTPRINT OF BUILDING ADDITION - SEE FIRST FLOOR PLAN



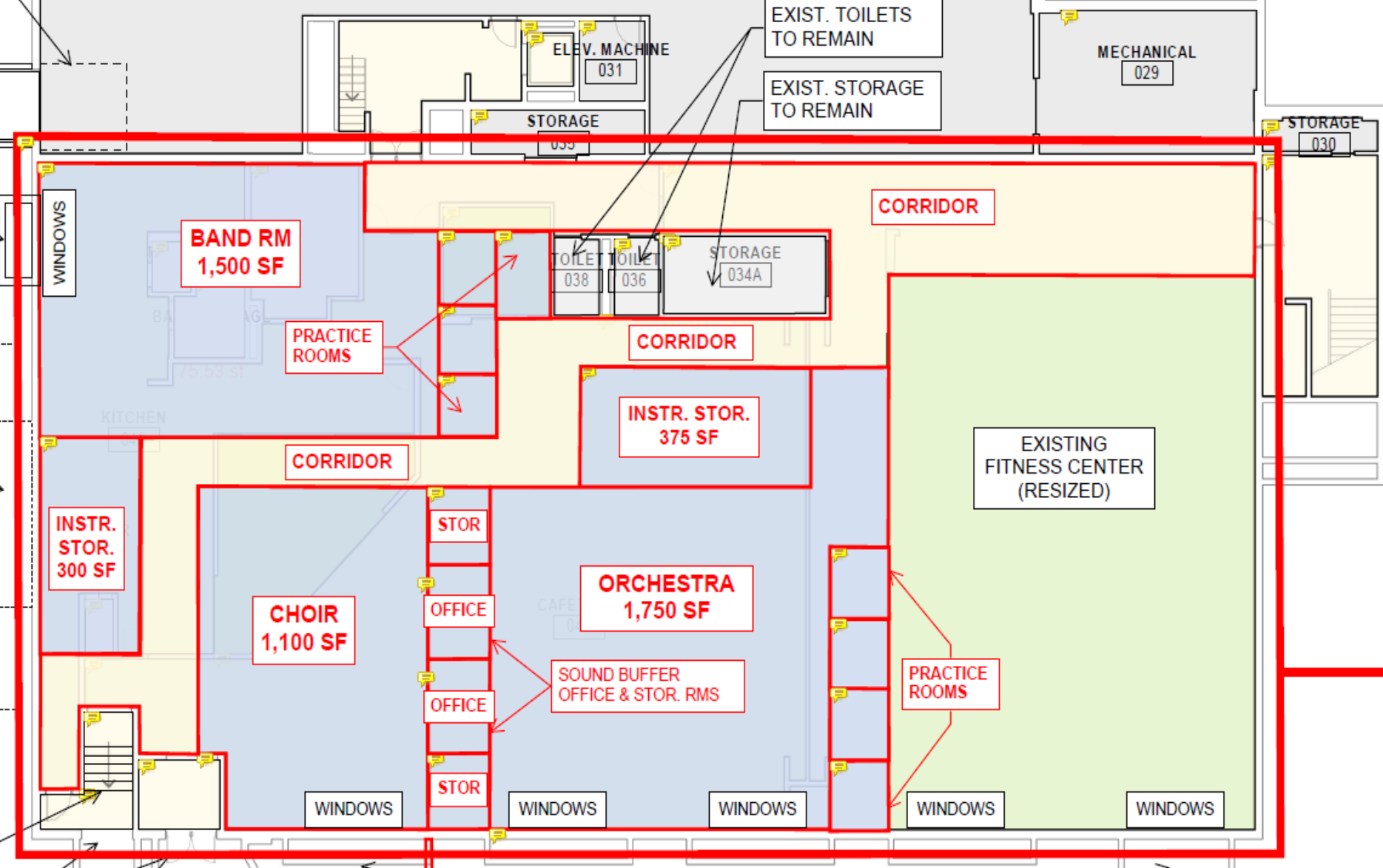
LINCOLN MIDDLE SCHOOL



LOWER LEVEL FLOOR PLAN

03/06/2024





PHASE II: 11,600 SF
RENOVATE EXISTING KITCHEN AND CAFETERIA SPACE INTO MUSIC SPACES
RESIZE FITNESS CENTER

EXIST. WINDOWS TO REMAIN

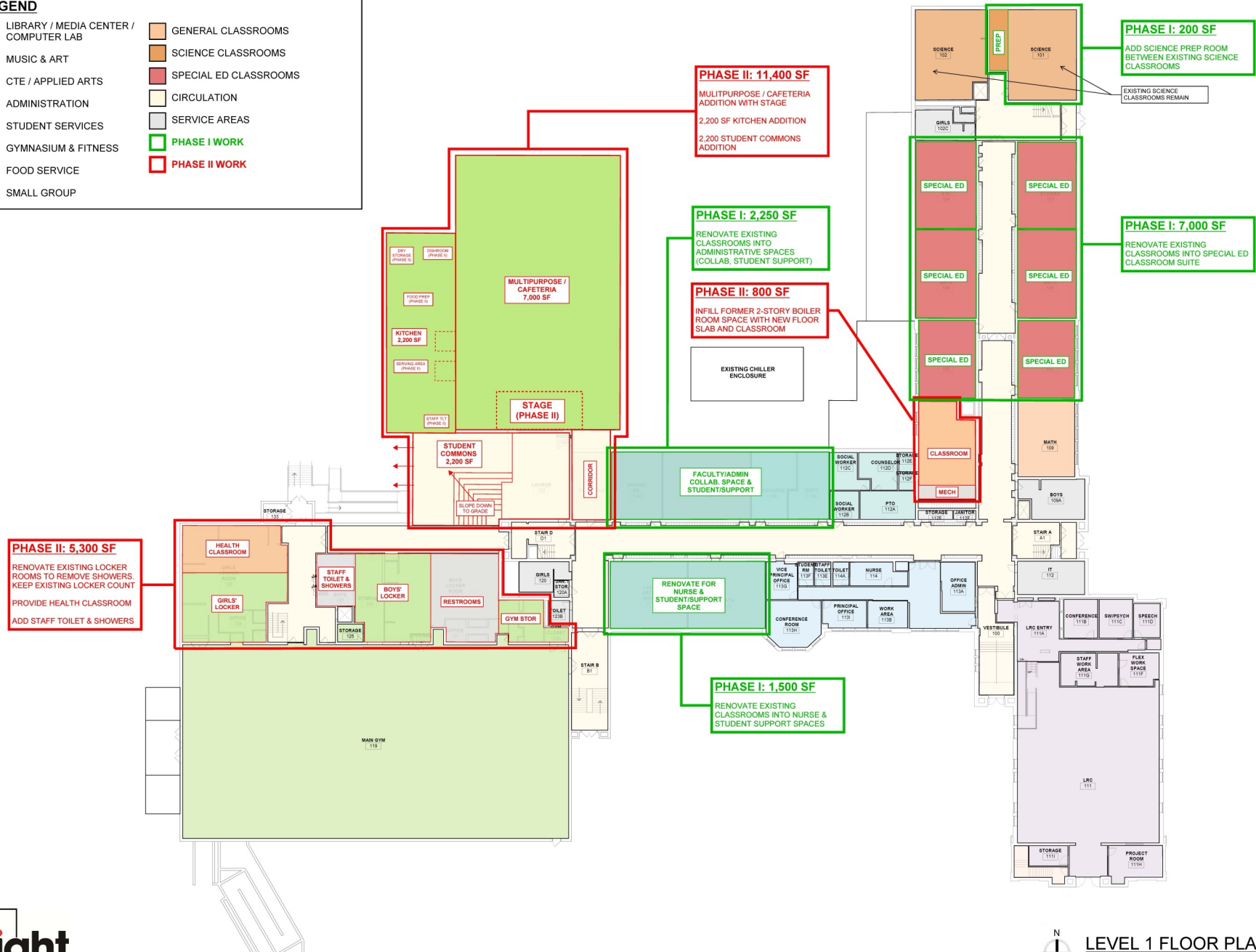
POTENTIAL WINDOW WELL / LANDING ENLARGEMENT

Music Space





LEGEND	
	LIBRARY / MEDIA CENTER / COMPUTER LAB
	MUSIC & ART
	CTE / APPLIED ARTS
	ADMINISTRATION
	STUDENT SERVICES
	GYMNASIUM & FITNESS
	FOOD SERVICE
	SMALL GROUP
	GENERAL CLASSROOMS
	SCIENCE CLASSROOMS
	SPECIAL ED CLASSROOMS
	CIRCULATION
	SERVICE AREAS
	PHASE I WORK
	PHASE II WORK



LINCOLN MIDDLE SCHOOL

LEVEL 1 FLOOR PLAN
03/06/2024





LEGEND	
	LIBRARY / MEDIA CENTER / COMPUTER LAB
	MUSIC & ART
	CTE / APPLIED ARTS
	ADMINISTRATION
	STUDENT SERVICES
	GYMNASIUM & FITNESS
	FOOD SERVICE
	SMALL GROUP
	GENERAL CLASSROOMS
	SCIENCE CLASSROOMS
	SPECIAL ED CLASSROOMS
	CIRCULATION
	SERVICE AREAS
	PHASE I WORK
	PHASE II WORK

PHASE II: 5,300 SF
 RENOVATE EXISTING LOCKER ROOMS TO REMOVE SHOWERS. KEEP EXISTING LOCKER COUNT
 PROVIDE HEALTH CLASSROOM
 ADD STAFF TOILET & SHOWERS

PHASE II: 11,400 SF
 MULTIPURPOSE CAFETERIA ADDITION WITH STAGE
 2,200 SF KITCHEN ADDITION
 2,200 SF STUDENT COMMONS ADDITION

PHASE I: 2,250 SF
 RENOVATE EXISTING CLASSROOMS INTO ADMINISTRATIVE SPACES (COLLAB, STUDENT SUPPORT)

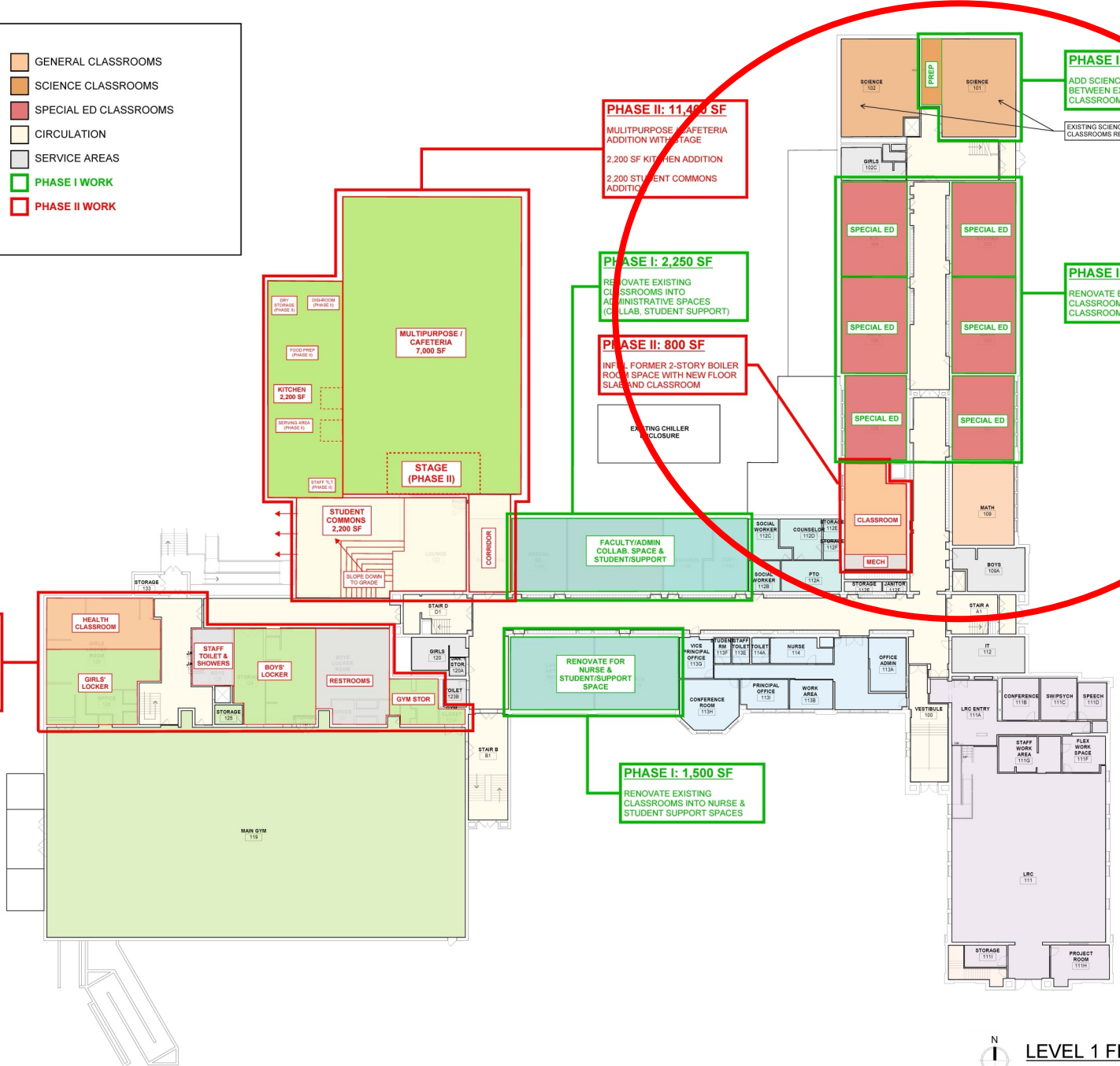
PHASE II: 800 SF
 INFILL FORMER 2-STORY BOILER ROOM SPACE WITH NEW FLOOR SLAB AND CLASSROOM

PHASE I: 200 SF
 ADD SCIENCE PREP ROOM BETWEEN EXISTING SCIENCE CLASSROOMS

PHASE I: 7,000 SF
 RENOVATE EXISTING CLASSROOMS INTO SPECIAL ED CLASSROOM SUITE

PHASE II: 800 SF
 INFILL FORMER 2-STORY BOILER ROOM SPACE WITH NEW FLOOR SLAB AND CLASSROOM

PHASE I: 1,500 SF
 RENOVATE EXISTING CLASSROOMS INTO NURSE & STUDENT SUPPORT SPACES



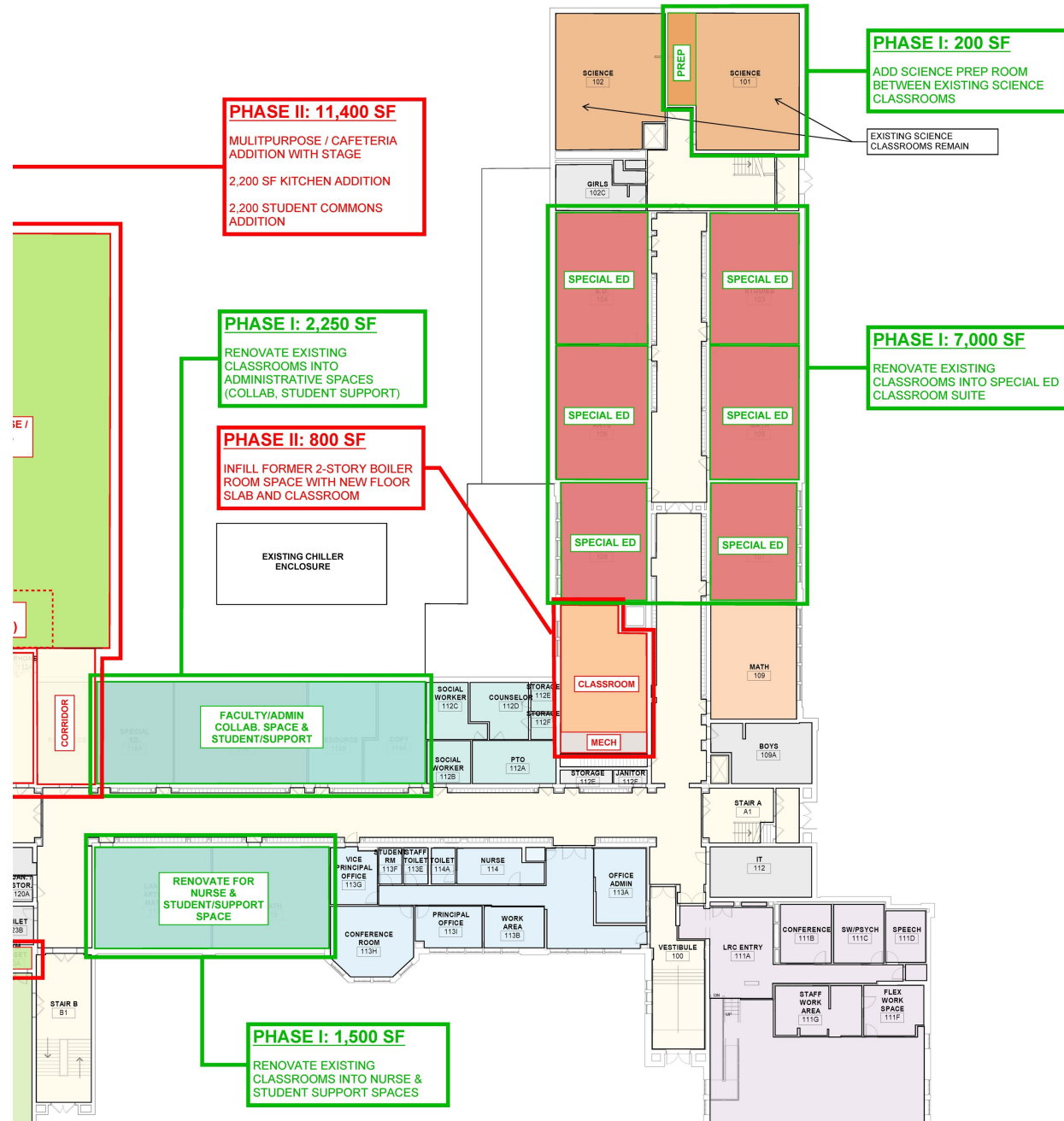
LINCOLN MIDDLE SCHOOL



LEVEL 1 FLOOR PLAN

03/06/2024





Special Education Spaces





LEGEND	
	LIBRARY / MEDIA CENTER / COMPUTER LAB
	MUSIC & ART
	CTE / APPLIED ARTS
	ADMINISTRATION
	STUDENT SERVICES
	GYMNASIUM & FITNESS
	FOOD SERVICE
	SMALL GROUP
	GENERAL CLASSROOMS
	SCIENCE CLASSROOMS
	SPECIAL ED CLASSROOMS
	CIRCULATION
	SERVICE AREAS
	PHASE I WORK
	PHASE II WORK

PHASE II: 5,300 SF
 RENOVATE EXISTING LOCKER ROOMS TO REMOVE SHOWERS. KEEP EXISTING LOCKER COUNT
 PROVIDE HEALTH CLASSROOM
 ADD STAFF TOILET & SHOWERS

PHASE II: 11,400 SF
 MULTIPURPOSE / CAFETERIA ADDITION WITH STAGE
 2,200 SF KITCHEN ADDITION
 2,200 SF STUDENT COMMONS ADDITION

PHASE I: 2,250 SF
 RENOVATE EXISTING CLASSROOMS INTO ADMINISTRATIVE SPACE (COLLAB, STUDENT SUPPORT)

PHASE II: 800 SF
 INFILL FORMER 2-STORY BOILER ROOM SPACE WITH NEW FLOOR SLAB AND CLASSROOM

PHASE I: 200 SF
 ADD SCIENCE PREP ROOM BETWEEN EXISTING SCIENCE CLASSROOMS

PHASE I: 7,000 SF
 RENOVATE EXISTING CLASSROOMS INTO SPECIAL ED CLASSROOM SUITE

PHASE I: 1,500 SF
 RENOVATE EXISTING CLASSROOMS INTO NURSE & STUDENT SUPPORT SPACES



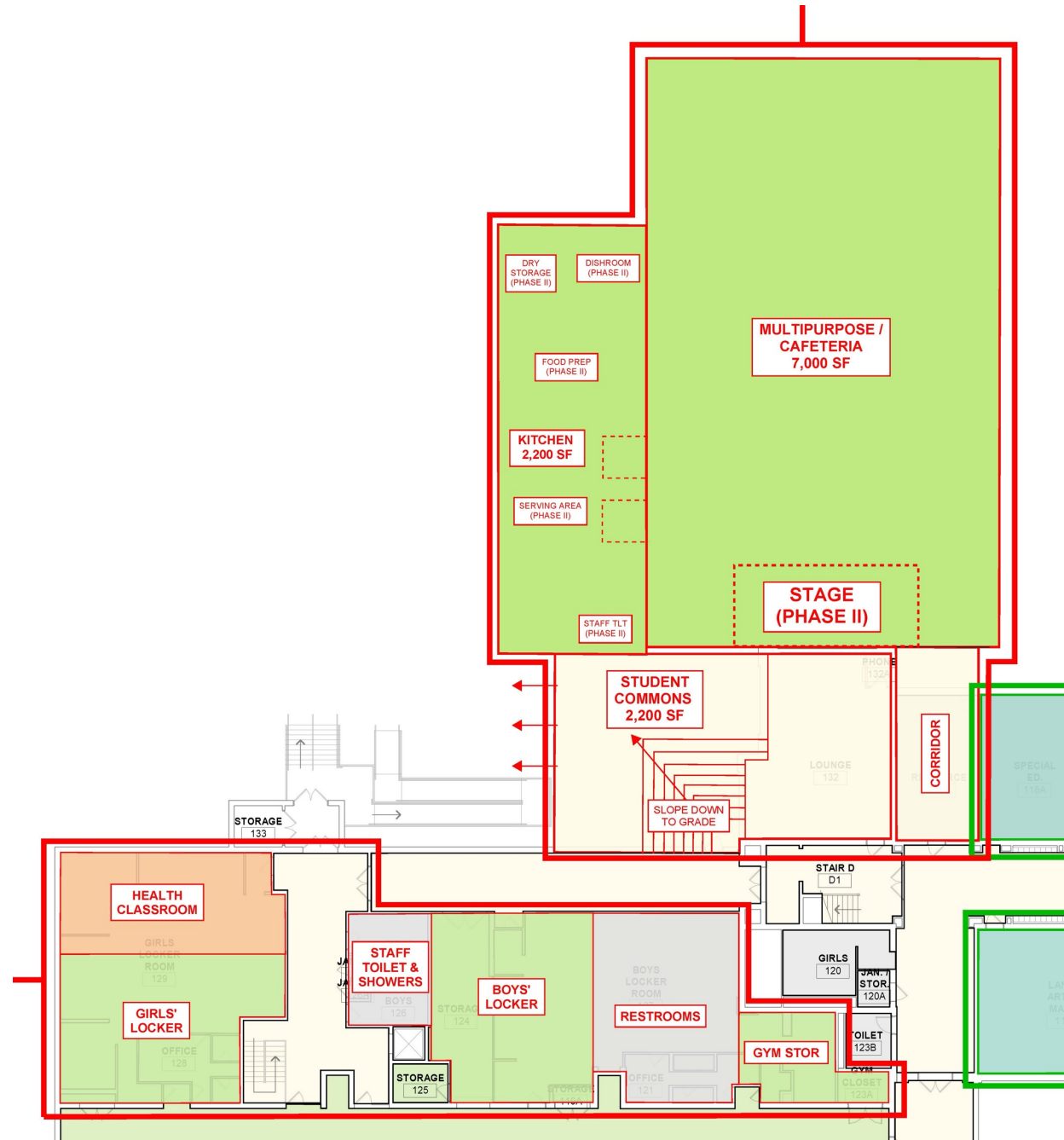
LINCOLN MIDDLE SCHOOL



LEVEL 1 FLOOR PLAN

03/06/2024





Multipurpose/Commons Area

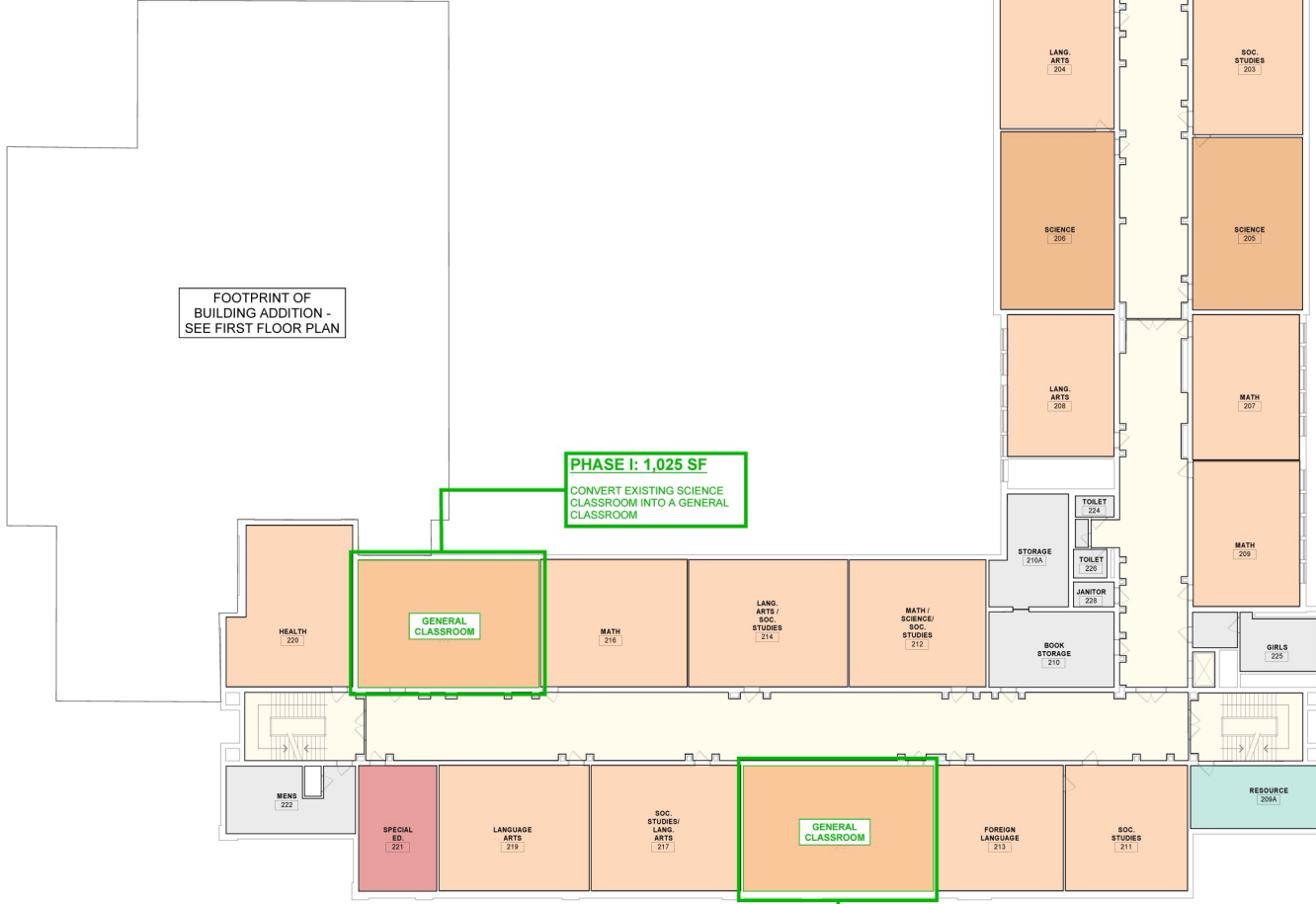


Multipurpose/ Commons Area





LEGEND			
	LIBRARY / MEDIA CENTER / COMPUTER LAB		GENERAL CLASSROOMS
	MUSIC & ART		SCIENCE CLASSROOMS
	CTE / APPLIED ARTS		SPECIAL ED CLASSROOMS
	ADMINISTRATION		CIRCULATION
	STUDENT SERVICES		SERVICE AREAS
	GYMNASIUM & FITNESS		PHASE I WORK
	FOOD SERVICE		PHASE II WORK
	SMALL GROUP		



LINCOLN MIDDLE SCHOOL



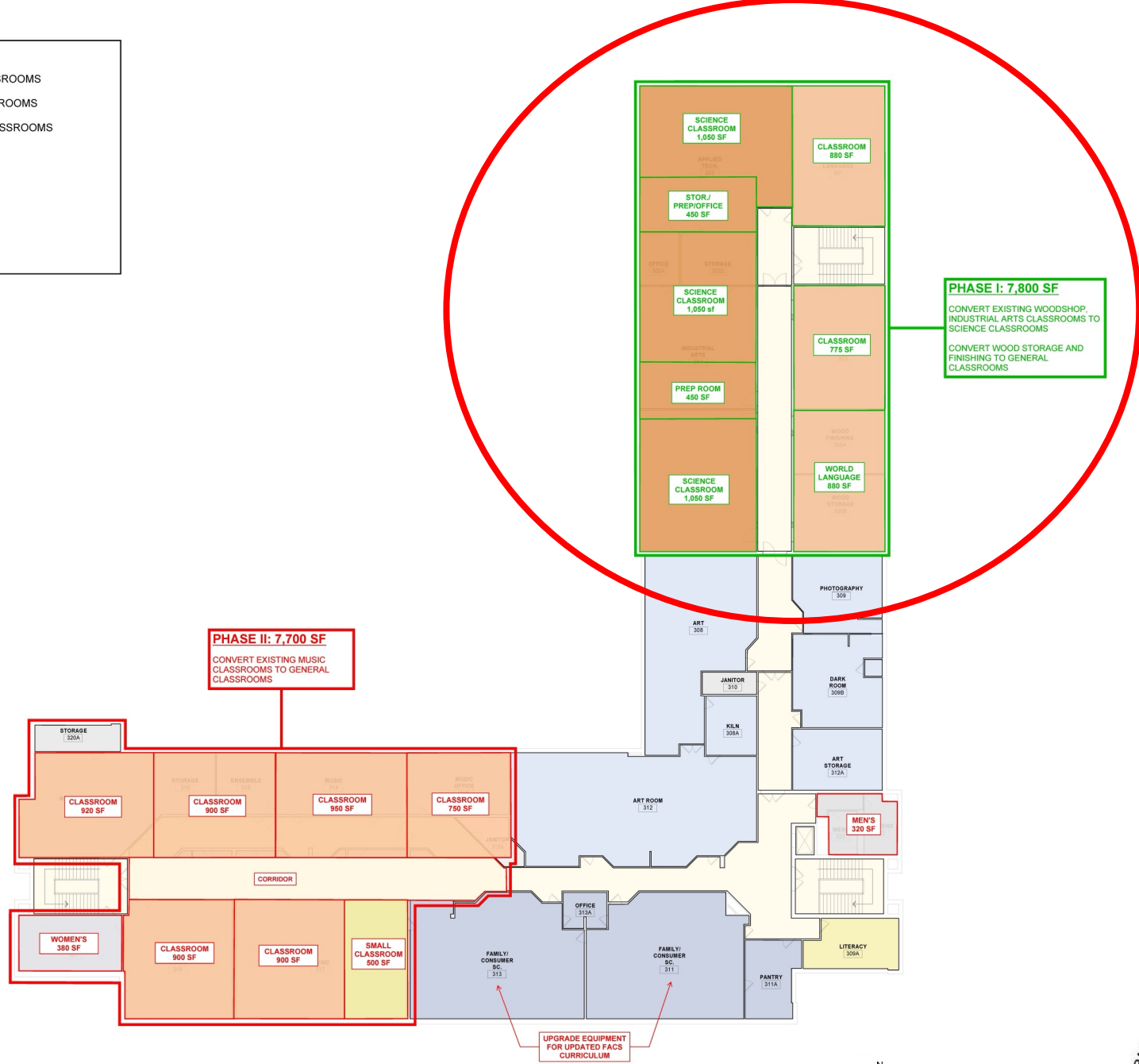
LEVEL 2 FLOOR PLAN

03/06/2024





LEGEND			
	LIBRARY / MEDIA CENTER / COMPUTER LAB		GENERAL CLASSROOMS
	MUSIC & ART		SCIENCE CLASSROOMS
	CTE / APPLIED ARTS		SPECIAL ED CLASSROOMS
	ADMINISTRATION		CIRCULATION
	STUDENT SERVICES		SERVICE AREAS
	GYMNASIUM & FITNESS		PHASE I WORK
	FOOD SERVICE		PHASE II WORK
	SMALL GROUP		



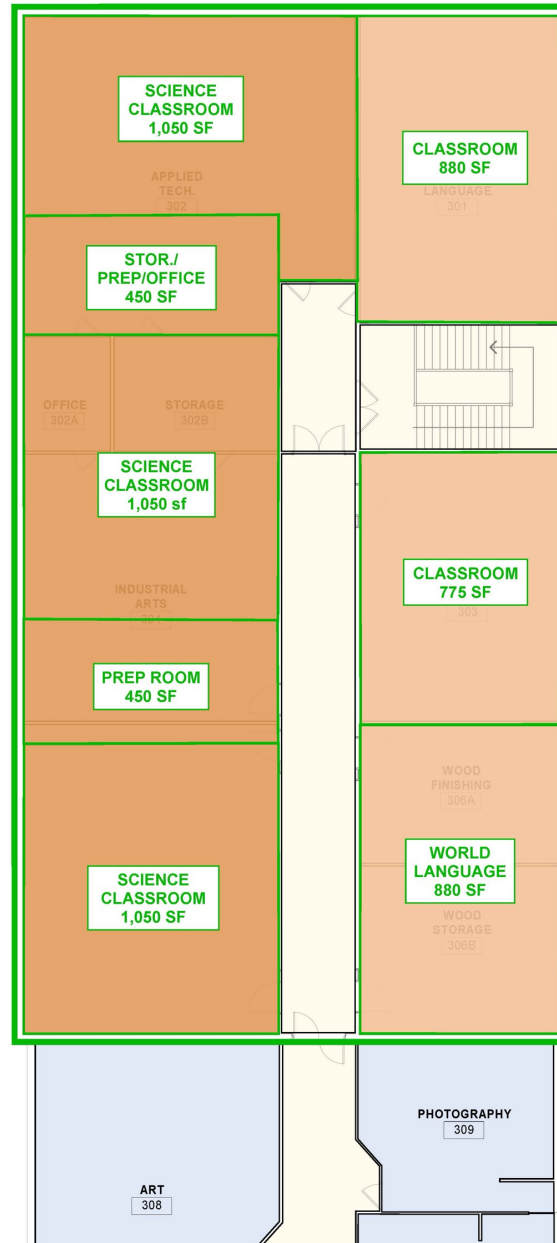
LINCOLN MIDDLE SCHOOL



LEVEL 3 FLOOR PLAN

03/06/2024





PHASE I: 7,800 SF
CONVERT EXISTING WOODSHOP, INDUSTRIAL ARTS CLASSROOMS TO SCIENCE CLASSROOMS
CONVERT WOOD STORAGE AND FINISHING TO GENERAL CLASSROOMS

Science Labs

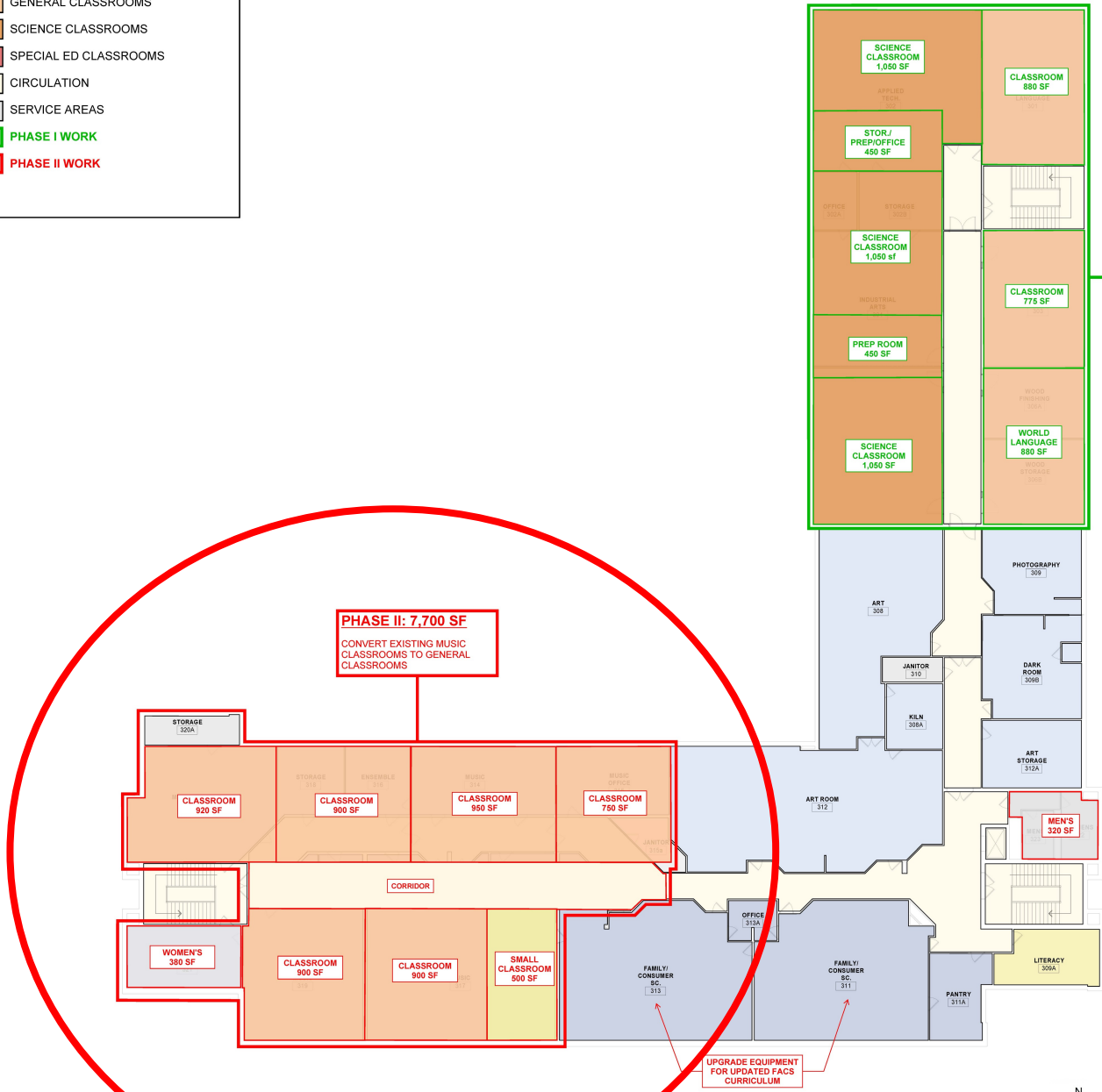


Science Labs





LEGEND			
	LIBRARY / MEDIA CENTER / COMPUTER LAB		GENERAL CLASSROOMS
	MUSIC & ART		SCIENCE CLASSROOMS
	CTE / APPLIED ARTS		SPECIAL ED CLASSROOMS
	ADMINISTRATION		CIRCULATION
	STUDENT SERVICES		SERVICE AREAS
	GYMNASIUM & FITNESS		PHASE I WORK
	FOOD SERVICE		PHASE II WORK
	SMALL GROUP		



LINCOLN MIDDLE SCHOOL



LEVEL 3 FLOOR PLAN

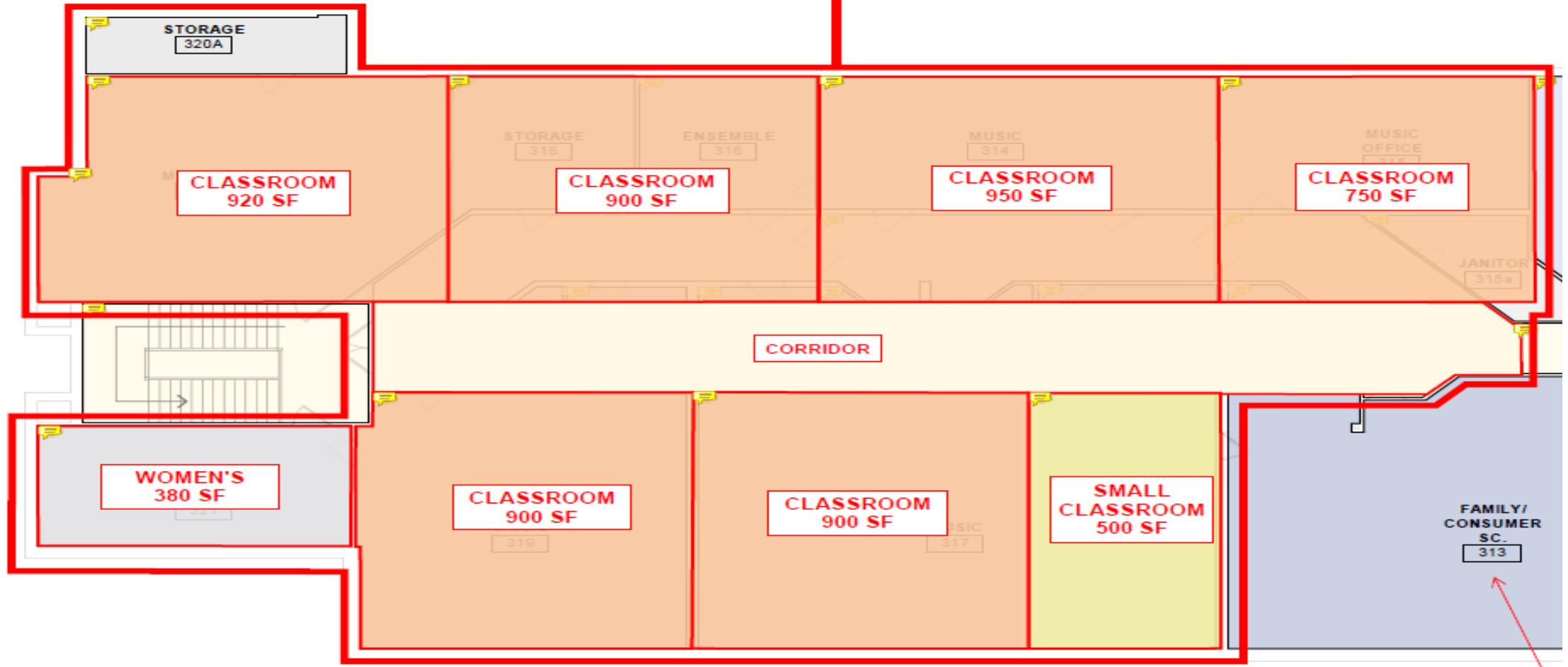
03/06/2024





PHASE II: 7,700 SF

CONVERT EXISTING MUSIC CLASSROOMS TO GENERAL CLASSROOMS





Emerson Middle School

- **Health, Safety & Security Upgrades**

- All interior doors & frames
- HVAC System

- **Classroom Modernization**

- All science labs & classrooms
- Renovate spaces to include more classrooms for intervention and special education
- Remodeled band & choir room
- New special education rooms for Life Skills program
- New spaces for individual student assistance
- Modern furniture & technology

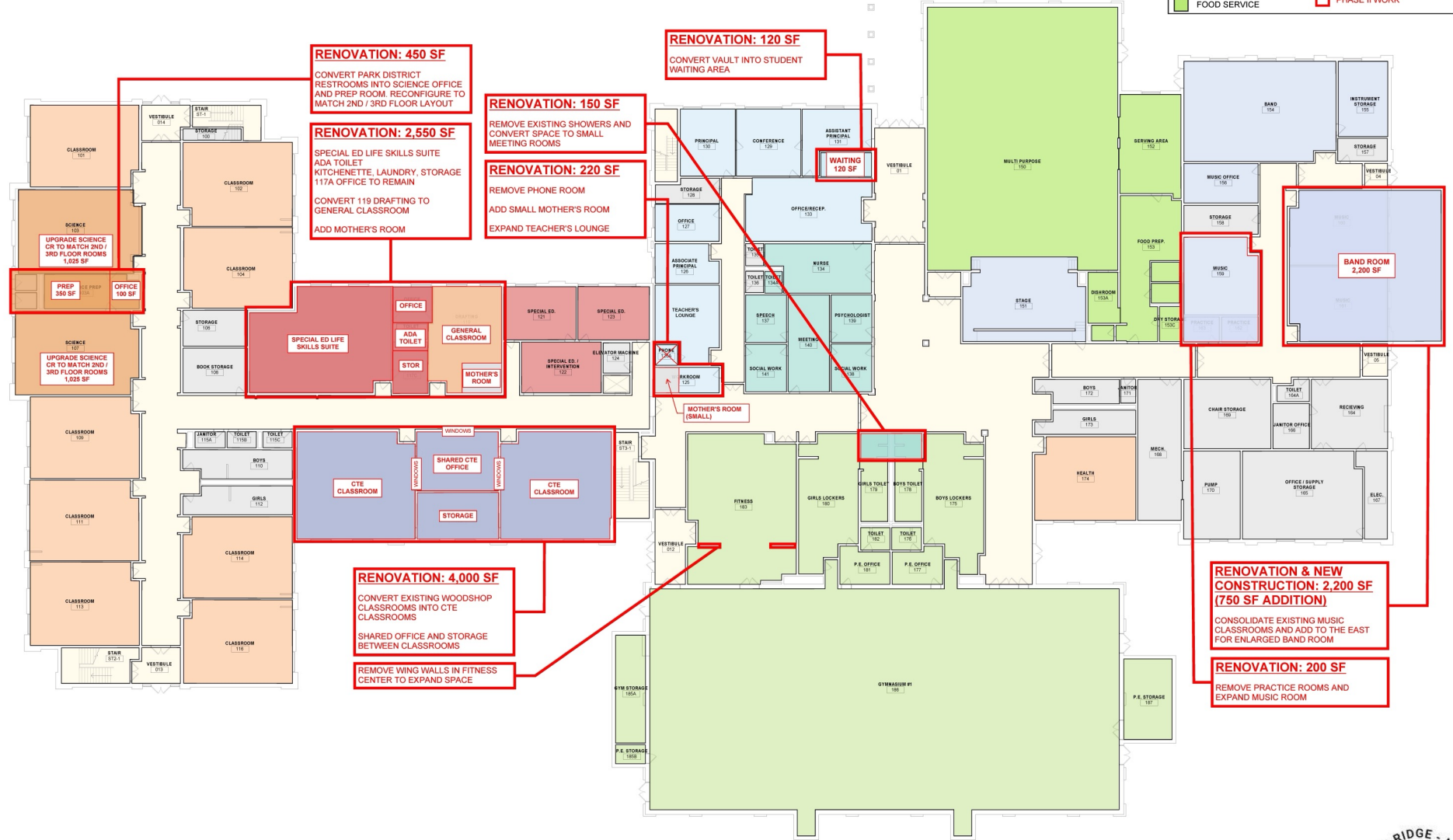
- **Mechanical/Infrastructure Improvements**

- Masonry issues
- Downspouts
- LED lighting throughout building
- Acid dilution traps





LEGEND			
	LIBRARY / MEDIA CENTER / COMPUTER LAB		SMALL GROUP
	MUSIC & ART		GENERAL CLASSROOMS
	CTE / APPLIED ARTS		SCIENCE CLASSROOMS
	ADMINISTRATION		SPECIAL ED CLASSROOMS
	STUDENT SERVICES		CIRCULATION
	GYMNASIUM & FITNESS		SERVICE AREAS
	FOOD SERVICE		PHASE II WORK



RENOVATION: 450 SF
 CONVERT PARK DISTRICT RESTROOMS INTO SCIENCE OFFICE AND PREP ROOM. RECONFIGURE TO MATCH 2ND / 3RD FLOOR LAYOUT

RENOVATION: 120 SF
 CONVERT VAULT INTO STUDENT WAITING AREA

RENOVATION: 2,550 SF
 SPECIAL ED LIFE SKILLS SUITE
 ADA TOILET
 KITCHENETTE, LAUNDRY, STORAGE
 117A OFFICE TO REMAIN
 CONVERT 119 DRAFTING TO GENERAL CLASSROOM
 ADD MOTHER'S ROOM

RENOVATION: 150 SF
 REMOVE EXISTING SHOWERS AND CONVERT SPACE TO SMALL MEETING ROOMS

RENOVATION: 220 SF
 REMOVE PHONE ROOM
 ADD SMALL MOTHER'S ROOM
 EXPAND TEACHER'S LOUNGE

WAITING 120 SF

PREP 350 SF
OFFICE 100 SF

UPGRADE SCIENCE CR TO MATCH 2ND / 3RD FLOOR ROOMS 1,025 SF

SPECIAL ED LIFE SKILLS SUITE
 ADA TOILET
 GENERAL CLASSROOM
 MOTHER'S ROOM

CTE CLASSROOM
 SHARED CTE OFFICE
 STORAGE
CTE CLASSROOM

RENOVATION: 4,000 SF
 CONVERT EXISTING WOODSHOP CLASSROOMS INTO CTE CLASSROOMS
 SHARED OFFICE AND STORAGE BETWEEN CLASSROOMS
 REMOVE WING WALLS IN FITNESS CENTER TO EXPAND SPACE

RENOVATION & NEW CONSTRUCTION: 2,200 SF (750 SF ADDITION)
 CONSOLIDATE EXISTING MUSIC CLASSROOMS AND ADD TO THE EAST FOR ENLARGED BAND ROOM

RENOVATION: 200 SF
 REMOVE PRACTICE ROOMS AND EXPAND MUSIC ROOM



EMERSON MIDDLE SCHOOL





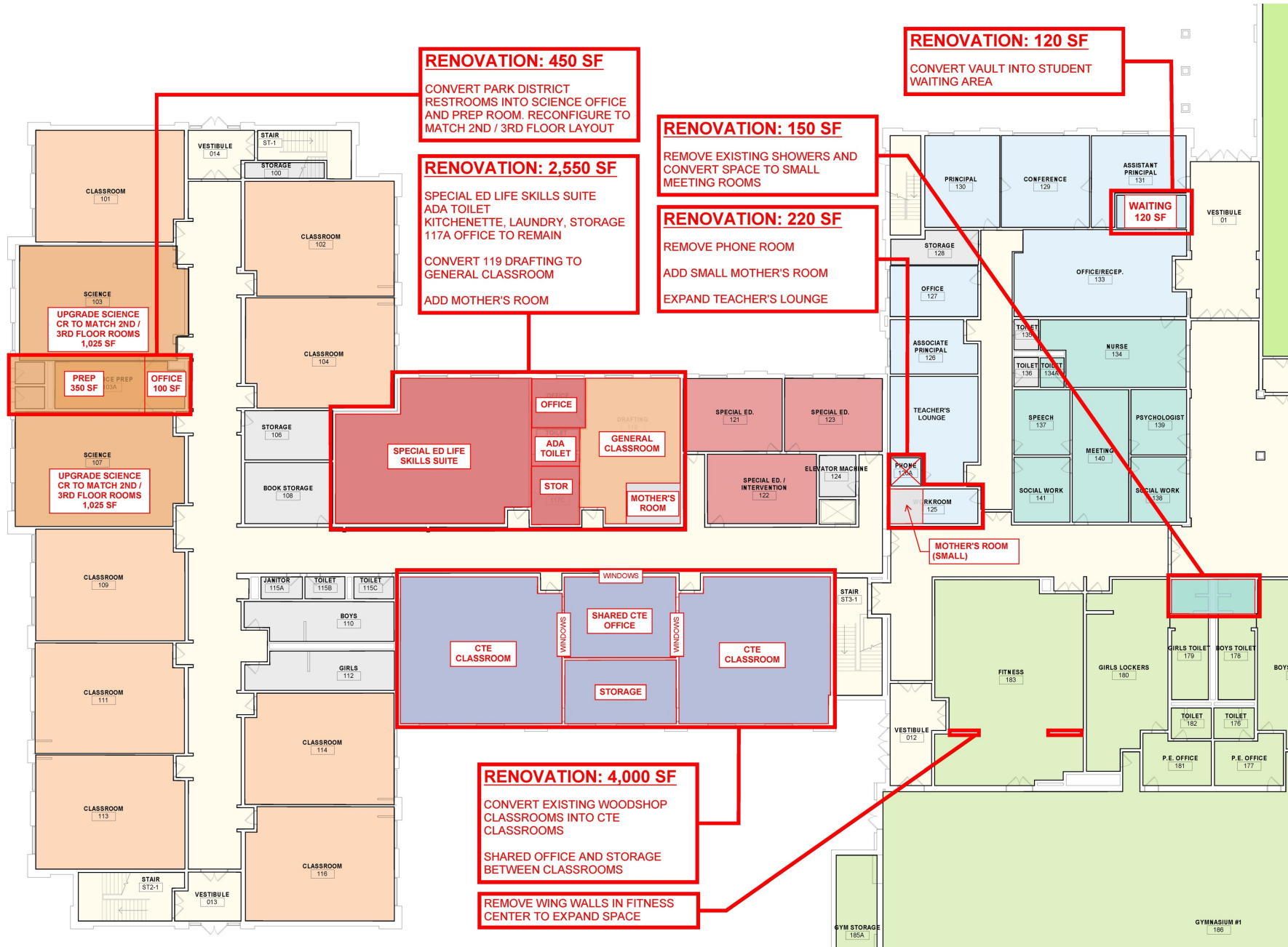
LEGEND	
	LIBRARY / MEDIA CENTER / COMPUTER LAB
	MUSIC & ART
	CTE / APPLIED ARTS
	ADMINISTRATION
	STUDENT SERVICES
	GYMNASIUM & FITNESS
	FOOD SERVICE
	SMALL GROUP
	GENERAL CLASSROOMS
	SCIENCE CLASSROOMS
	SPECIAL ED CLASSROOMS
	CIRCULATION
	SERVICE AREAS
	PHASE II WORK



EMERSON MIDDLE SCHOOL

N
LEVEL 1 FLOOR PLAN
03/06/2024





RENOVATION: 450 SF
 CONVERT PARK DISTRICT RESTROOMS INTO SCIENCE OFFICE AND PREP ROOM. RECONFIGURE TO MATCH 2ND / 3RD FLOOR LAYOUT

RENOVATION: 2,550 SF
 SPECIAL ED LIFE SKILLS SUITE
 ADA TOILET
 KITCHENETTE, LAUNDRY, STORAGE
 117A OFFICE TO REMAIN
 CONVERT 119 DRAFTING TO GENERAL CLASSROOM
 ADD MOTHER'S ROOM

RENOVATION: 150 SF
 REMOVE EXISTING SHOWERS AND CONVERT SPACE TO SMALL MEETING ROOMS

RENOVATION: 220 SF
 REMOVE PHONE ROOM
 ADD SMALL MOTHER'S ROOM
 EXPAND TEACHER'S LOUNGE

RENOVATION: 120 SF
 CONVERT VAULT INTO STUDENT WAITING AREA

PREP 350 SF
OFFICE 100 SF

UPGRADE SCIENCE CR TO MATCH 2ND / 3RD FLOOR ROOMS 1,025 SF

UPGRADE SCIENCE CR TO MATCH 2ND / 3RD FLOOR ROOMS 1,025 SF

OFFICE
 ADA TOILET
 STORAGE
 MOTHER'S ROOM
 GENERAL CLASSROOM

CTE CLASSROOM
 SHARED CTE OFFICE
 STORAGE
 CTE CLASSROOM

RENOVATION: 4,000 SF
 CONVERT EXISTING WOODSHOP CLASSROOMS INTO CTE CLASSROOMS
 SHARED OFFICE AND STORAGE BETWEEN CLASSROOMS
 REMOVE WING WALLS IN FITNESS CENTER TO EXPAND SPACE

WAITING 120 SF

MOTHER'S ROOM (SMALL)

CLASSROOM 101

STAIR ST-1

STORAGE 100

VESTIBULE 014

CLASSROOM 102

CLASSROOM 104

STORAGE 106

BOOK STORAGE 108

CLASSROOM 109

CLASSROOM 111

CLASSROOM 113

STAIR ST2-1

VESTIBULE 013

CLASSROOM 114

CLASSROOM 116

CLASSROOM 118

CLASSROOM 120

CLASSROOM 122

CLASSROOM 124

CLASSROOM 126

CLASSROOM 128

CLASSROOM 130

CLASSROOM 132

CLASSROOM 134

CLASSROOM 136

CLASSROOM 138

CLASSROOM 140

CLASSROOM 142

CLASSROOM 144

CLASSROOM 146

CLASSROOM 148

CLASSROOM 150

CLASSROOM 152

CLASSROOM 154

CLASSROOM 156

CLASSROOM 158

CLASSROOM 160

CLASSROOM 162

CLASSROOM 164

CLASSROOM 166

CLASSROOM 168

CLASSROOM 170

CLASSROOM 172

CLASSROOM 174

CLASSROOM 176

CLASSROOM 178

CLASSROOM 180

CLASSROOM 182

CLASSROOM 184

CLASSROOM 186

CLASSROOM 188

CLASSROOM 190

CLASSROOM 192

CLASSROOM 194

CLASSROOM 196

CLASSROOM 198

CLASSROOM 200

CLASSROOM 202

CLASSROOM 204

CLASSROOM 206

CLASSROOM 208

CLASSROOM 210

CLASSROOM 212

CLASSROOM 214

CLASSROOM 216

CLASSROOM 218

CLASSROOM 220

CLASSROOM 222

CLASSROOM 224

CLASSROOM 226

CLASSROOM 228

CLASSROOM 230

CLASSROOM 232

CLASSROOM 234

CLASSROOM 236

CLASSROOM 238

CLASSROOM 240

CLASSROOM 242

CLASSROOM 244

CLASSROOM 246

CLASSROOM 248

CLASSROOM 250

CLASSROOM 252

CLASSROOM 254

CLASSROOM 256

CLASSROOM 258

CLASSROOM 260

CLASSROOM 262

CLASSROOM 264

CLASSROOM 266

CLASSROOM 268

CLASSROOM 270

CLASSROOM 272

CLASSROOM 274

CLASSROOM 276

CLASSROOM 278

CLASSROOM 280

CLASSROOM 282

CLASSROOM 284

CLASSROOM 286

CLASSROOM 288

CLASSROOM 290

CLASSROOM 292

CLASSROOM 294

CLASSROOM 296

CLASSROOM 298

CLASSROOM 300

CLASSROOM 302

CLASSROOM 304

CLASSROOM 306

CLASSROOM 308

CLASSROOM 310

CLASSROOM 312

CLASSROOM 314

CLASSROOM 316

CLASSROOM 318

CLASSROOM 320

CLASSROOM 322

CLASSROOM 324

CLASSROOM 326

CLASSROOM 328

CLASSROOM 330

CLASSROOM 332

CLASSROOM 334

CLASSROOM 336

CLASSROOM 338

CLASSROOM 340

CLASSROOM 342

CLASSROOM 344

CLASSROOM 346

CLASSROOM 348

CLASSROOM 350

CLASSROOM 352

CLASSROOM 354

CLASSROOM 356

CLASSROOM 358

CLASSROOM 360

CLASSROOM 362

CLASSROOM 364

CLASSROOM 366

CLASSROOM 368

CLASSROOM 370

CLASSROOM 372

CLASSROOM 374

CLASSROOM 376

CLASSROOM 378

CLASSROOM 380

CLASSROOM 382

CLASSROOM 384

CLASSROOM 386

CLASSROOM 388

CLASSROOM 390

CLASSROOM 392

CLASSROOM 394

CLASSROOM 396

CLASSROOM 398

CLASSROOM 400

CLASSROOM 402

CLASSROOM 404

CLASSROOM 406

CLASSROOM 408

CLASSROOM 410

CLASSROOM 412

CLASSROOM 414

CLASSROOM 416

CLASSROOM 418

CLASSROOM 420

CLASSROOM 422

CLASSROOM 424

CLASSROOM 426

CLASSROOM 428

CLASSROOM 430

CLASSROOM 432

CLASSROOM 434

CLASSROOM 436

CLASSROOM 438

CLASSROOM 440

CLASSROOM 442

CLASSROOM 444

CLASSROOM 446

CLASSROOM 448

CLASSROOM 450

CLASSROOM 452

CLASSROOM 454

CLASSROOM 456

CLASSROOM 458

CLASSROOM 460

CLASSROOM 462

CLASSROOM 464

CLASSROOM 466

CLASSROOM 468

CLASSROOM 470

CLASSROOM 472

CLASSROOM 474

CLASSROOM 476

CLASSROOM 478

CLASSROOM 480

CLASSROOM 482

CLASSROOM 484

CLASSROOM 486

CLASSROOM 488

CLASSROOM 490

CLASSROOM 492

CLASSROOM 494

CLASSROOM 496

CLASSROOM 498

CLASSROOM 500

CLASSROOM 502

CLASSROOM 504

CLASSROOM 506

CLASSROOM 508

CLASSROOM 510

CLASSROOM 512

CLASSROOM 514

CLASSROOM 516

CLASSROOM 518

CLASSROOM 520

CLASSROOM 522

CLASSROOM 524

CLASSROOM 526

CLASSROOM 528

CLASSROOM 530

CLASSROOM 532

CLASSROOM 534

CLASSROOM 536

CLASSROOM 538

CLASSROOM 540

CLASSROOM 542

CLASSROOM 544

CLASSROOM 546

CLASSROOM 548

CLASSROOM 550

CLASSROOM 552

CLASSROOM 554

CLASSROOM 556

CLASSROOM 558

CLASSROOM 560

CLASSROOM 562

CLASSROOM 564

CLASSROOM 566

CLASSROOM 568

CLASSROOM 570

CLASSROOM 572

CLASSROOM 574

CLASSROOM 576

CLASSROOM 578

CLASSROOM 580

CLASSROOM 582

CLASSROOM 584

CLASSROOM 586

CLASSROOM 588

CLASSROOM 590

CLASSROOM 592

CLASSROOM 594

CLASSROOM 596

CLASSROOM 598

CLASSROOM 600

CLASSROOM 602

CLASSROOM 604

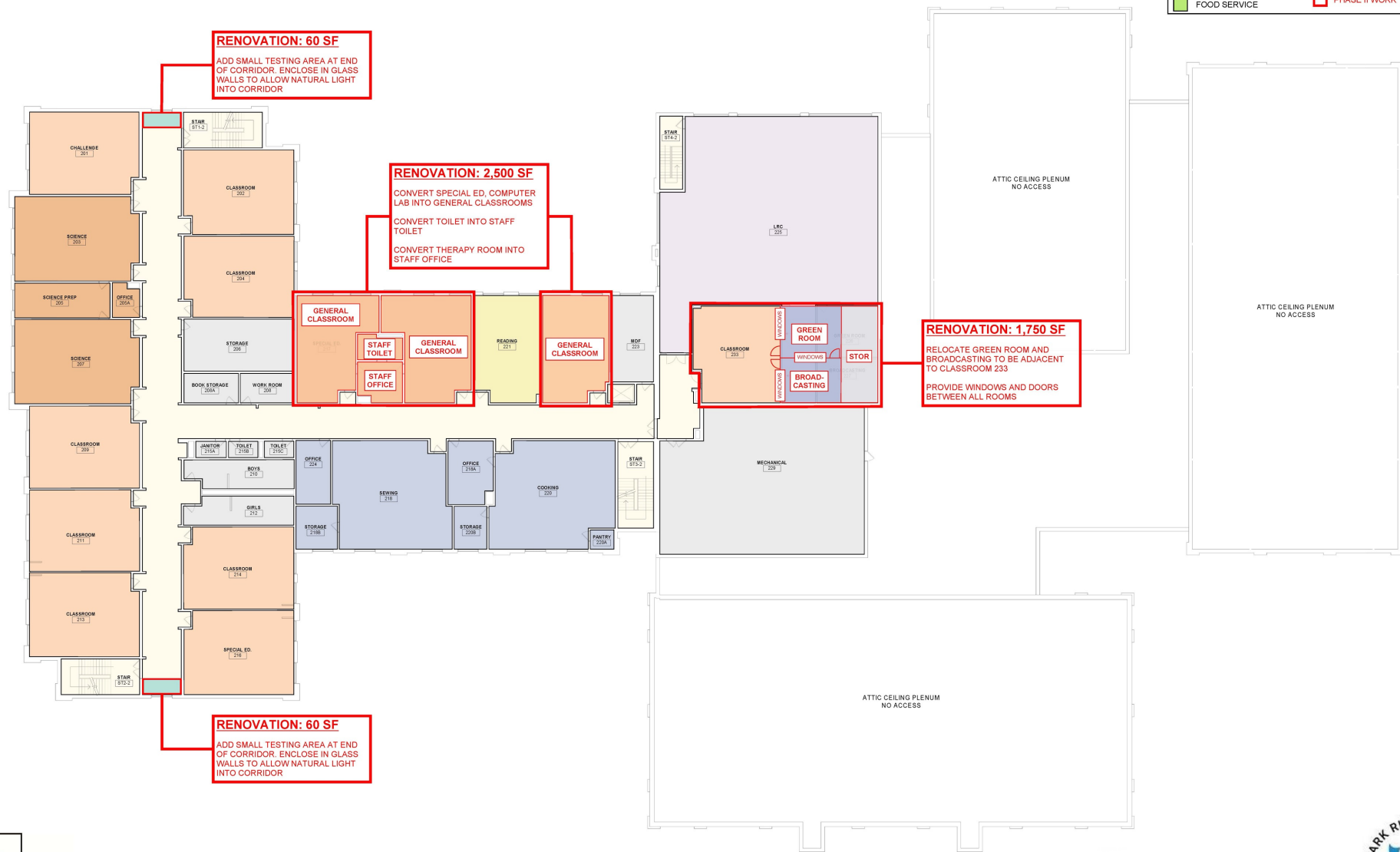
CLASSROOM 606

CLASSROOM 608

CLASSROOM 610



LEGEND			
	LIBRARY / MEDIA CENTER / COMPUTER LAB		SMALL GROUP
	MUSIC & ART		GENERAL CLASSROOMS
	CTE / APPLIED ARTS		SCIENCE CLASSROOMS
	ADMINISTRATION		SPECIAL ED CLASSROOMS
	STUDENT SERVICES		CIRCULATION
	GYMNASIUM & FITNESS		SERVICE AREAS
	FOOD SERVICE		PHASE II WORK



EMERSON MIDDLE SCHOOL



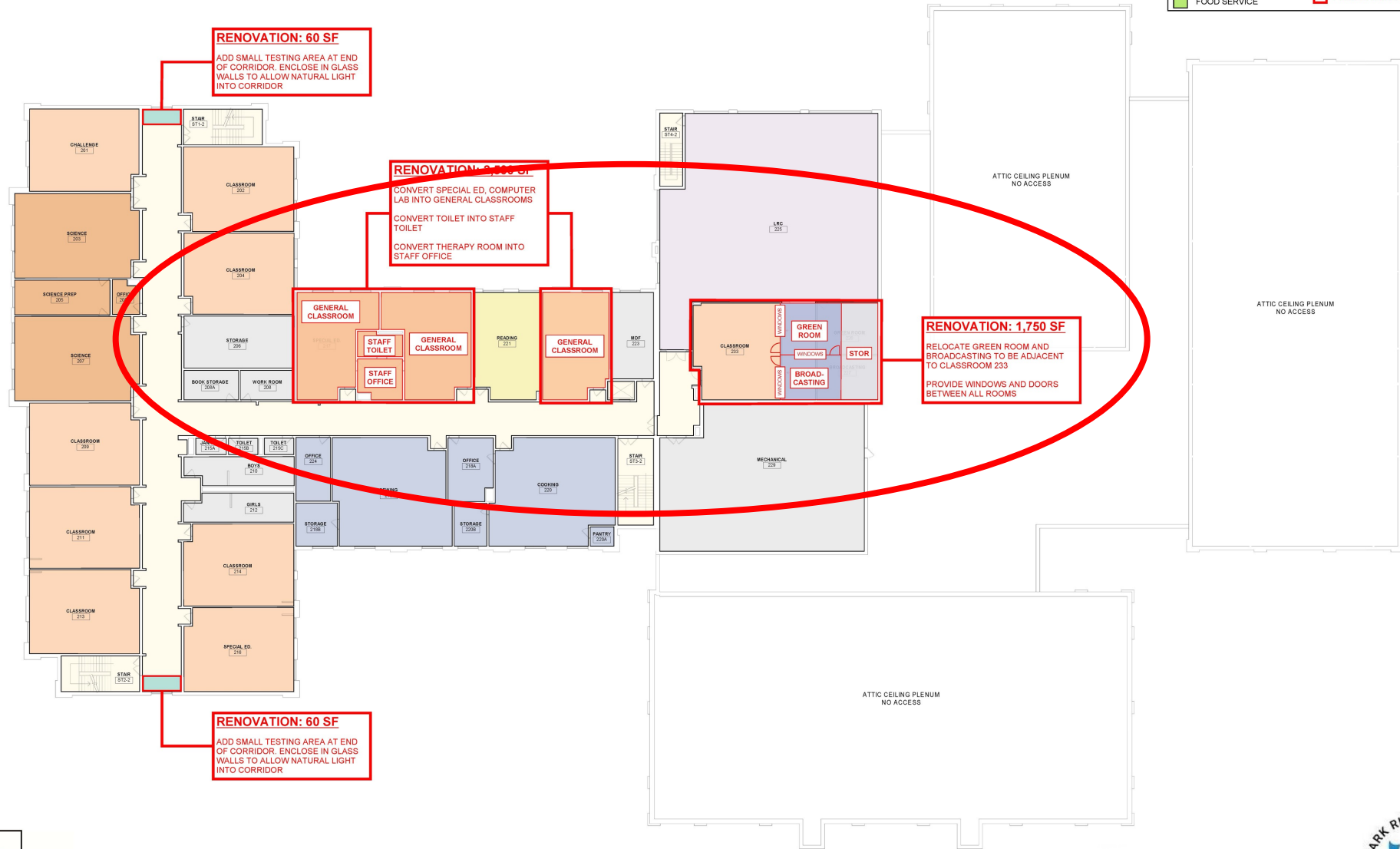
LEVEL 2 FLOOR PLAN

03/06/2024





LEGEND			
	LIBRARY / MEDIA CENTER / COMPUTER LAB		SMALL GROUP
	MUSIC & ART		GENERAL CLASSROOMS
	CTE / APPLIED ARTS		SCIENCE CLASSROOMS
	ADMINISTRATION		SPECIAL ED CLASSROOMS
	STUDENT SERVICES		CIRCULATION
	GYMNASIUM & FITNESS		SERVICE AREAS
	FOOD SERVICE		PHASE II WORK



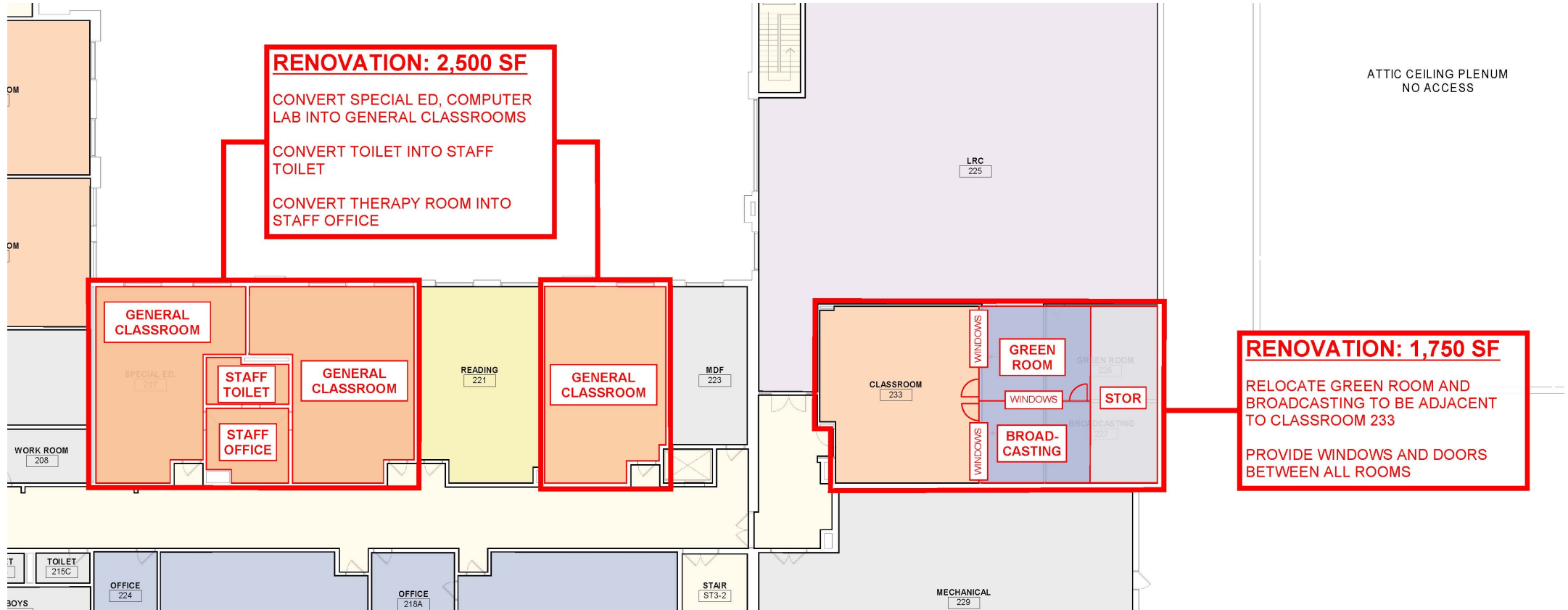
EMERSON MIDDLE SCHOOL



LEVEL 2 FLOOR PLAN

03/06/2024







LEGEND			
	LIBRARY / MEDIA CENTER / COMPUTER LAB		SMALL GROUP
	MUSIC & ART		GENERAL CLASSROOMS
	CTE / APPLIED ARTS		SCIENCE CLASSROOMS
	ADMINISTRATION		SPECIAL ED CLASSROOMS
	STUDENT SERVICES		CIRCULATION
	GYMNASIUM & FITNESS		SERVICE AREAS
	FOOD SERVICE		PHASE II WORK



EMERSON MIDDLE SCHOOL





LEGEND	
LIBRARY / MEDIA CENTER / COMPUTER LAB	SMALL GROUP
MUSIC & ART	GENERAL CLASSROOMS
CTE / APPLIED ARTS	SCIENCE CLASSROOMS
ADMINISTRATION	SPECIAL ED CLASSROOMS
STUDENT SERVICES	CIRCULATION
GYMNASIUM & FITNESS	SERVICE AREAS
FOOD SERVICE	PHASE II WORK



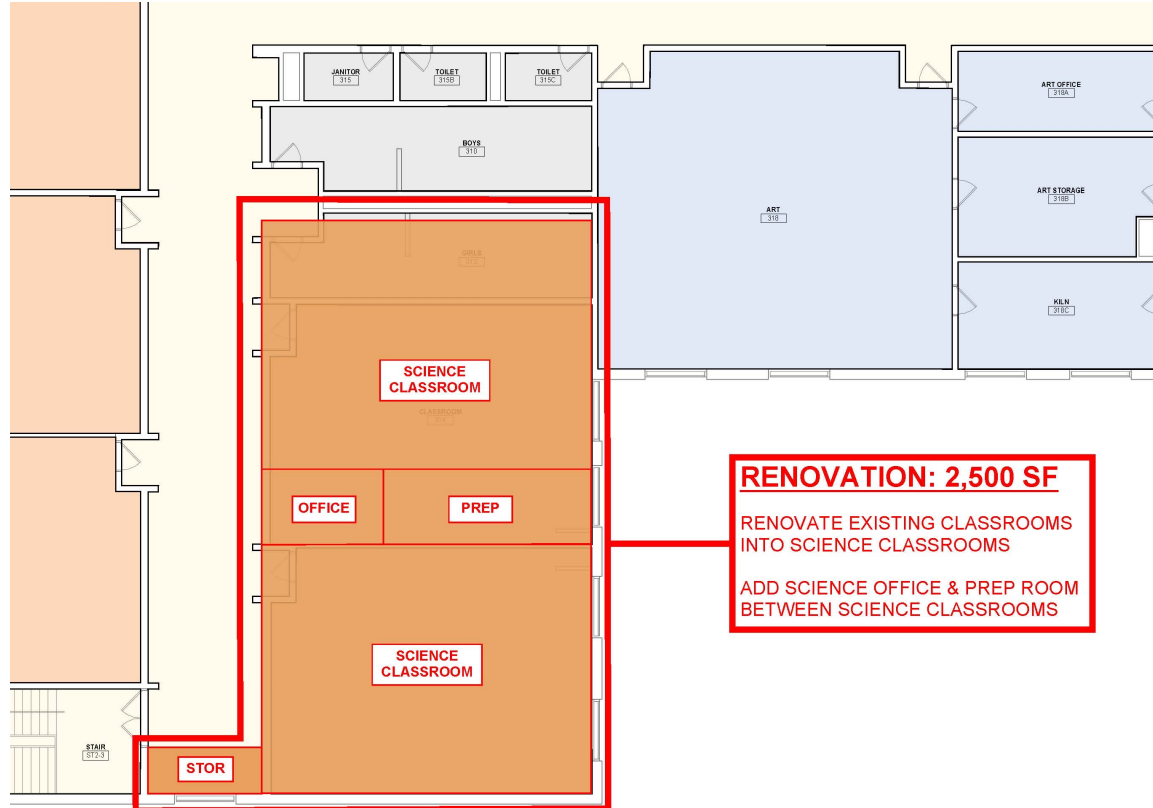
EMERSON MIDDLE SCHOOL



LEVEL 3 FLOOR PLAN

03/06/2024





RENOVATION: 2,500 SF
RENOVATE EXISTING CLASSROOMS
INTO SCIENCE CLASSROOMS
ADD SCIENCE OFFICE & PREP ROOM
BETWEEN SCIENCE CLASSROOMS



Carpenter Elementary School



- **Health, Safety & Security Upgrades**

- Interior doors & frames
- Fire alarm system
- Railings
- Playground

- **Classroom Modernization**

- Renovate area for Special Education program: SEL program

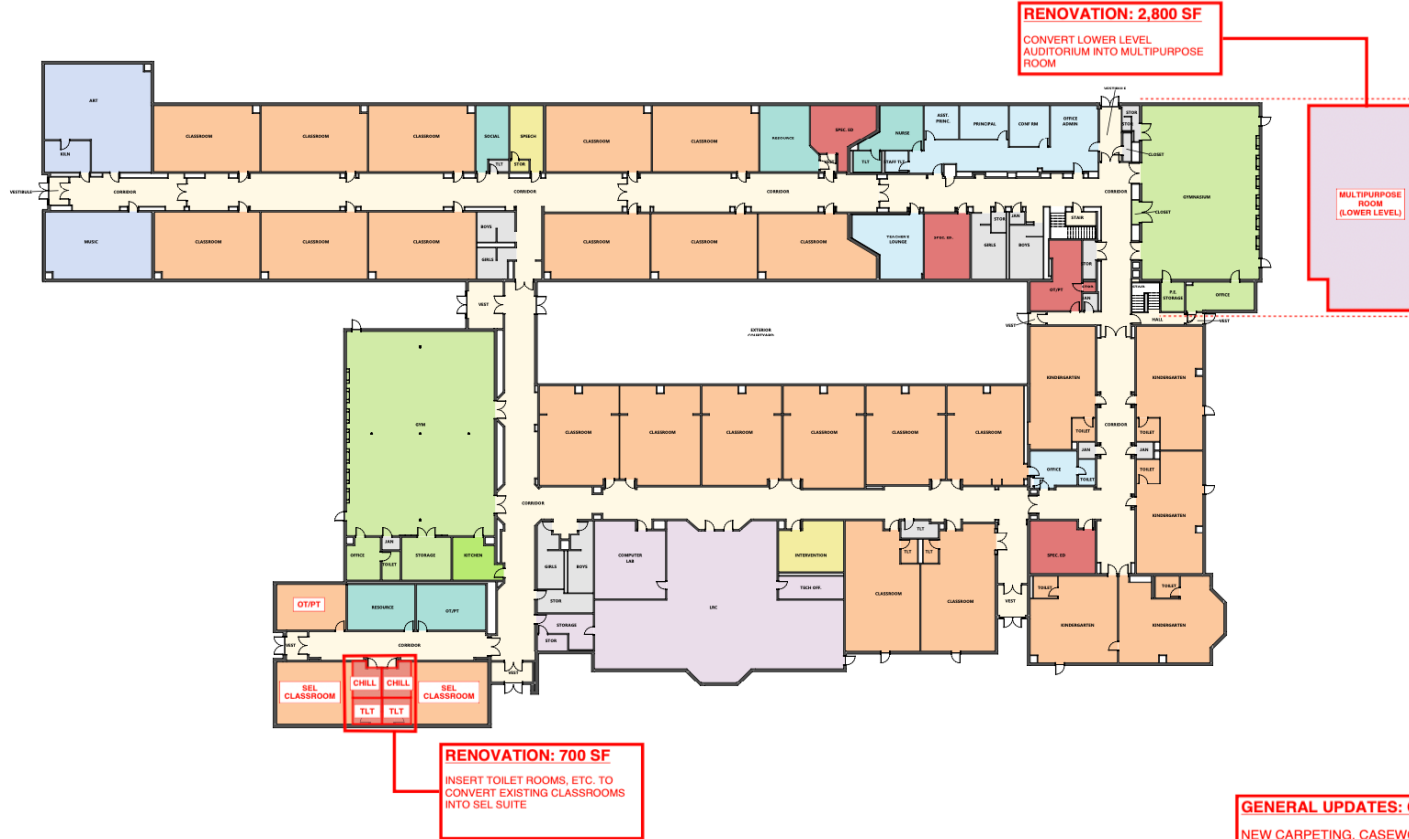
- **Mechanical/Infrastructure Improvements**

- Foundation issues in the lower level
- Masonry
- LED lighting across building
- Plumbing systems
- Casework
- Glazed block





LEGEND			
	LIBRARY / MEDIA CENTER / COMPUTER LAB		SMALL GROUP
	MUSIC & ART		GENERAL CLASSROOMS
	CTE / APPLIED ARTS		SCIENCE CLASSROOMS
	ADMINISTRATION		SPECIAL ED CLASSROOMS
	STUDENT SERVICES		CIRCULATION
	GYMNASIUM & FITNESS		SERVICE AREAS
	FOOD SERVICE		PHASE II WORK



CARPENTER ELEMENTARY

LEVEL 1 FLOOR PLAN
 2024-03-08





Field Elementary School

- **Health, Safety & Security Upgrades**

- Interior doors & frames
- Egress doors & frames
- Railings
- HVAC system
- ADA playground & surface

- **Classroom Modernization**

- Classes for special education & multi-lingual learners
- Offices for Social workers, psychologists, speech pathologists

- **Mechanical/Infrastructure Improvements**

- Downspouts are failing
- Masonry in need of repair
- LED lighting across building
- Plumbing systems
- Casework
- Glazed block





LEGEND			
[Light Blue Box]	LIBRARY / MEDIA CENTER / COMPUTER LAB	[Light Green Box]	SMALL GROUP
[Light Blue Box]	MUSIC & ART	[Orange Box]	GENERAL CLASSROOMS
[Light Blue Box]	CTE / APPLIED ARTS	[Light Orange Box]	SCIENCE CLASSROOMS
[Light Blue Box]	ADMINISTRATION	[Red Box]	SPECIAL ED CLASSROOMS
[Light Blue Box]	STUDENT SERVICES	[White Box]	CIRCULATION
[Light Green Box]	GYMNASIUM & FITNESS	[Light Grey Box]	SERVICE AREAS
[Light Green Box]	FOOD SERVICE	[Red Box]	PHASE II WORK



**2ND FLOOR ADDITION:
8,300 SF**
3 SPECIAL ED CLASSROOMS
4 INTERVENTION SPACES
MOTHER'S ROOM

GENERAL UPDATES: FIELD
NEW CARPETING, CASEWORK, LIGHTING, CEILINGS,
AND PAINT IN CLASSROOMS
NEW CARPETING IN HALLWAYS
HVAC STUDY



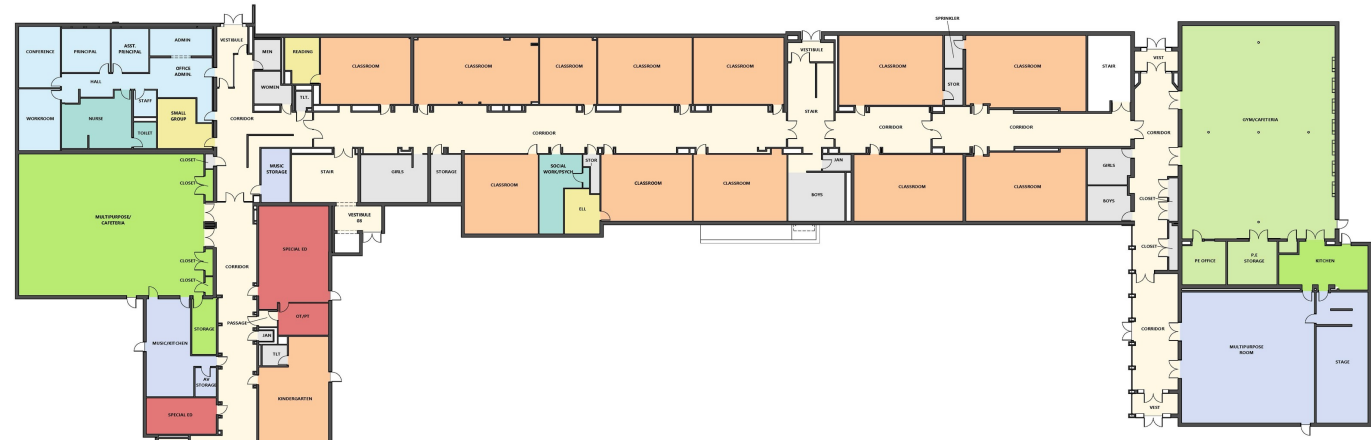
FIELD ELEMENTARY

LEVEL 1 FLOOR PLAN
2024-03-08





LEGEND			
	LIBRARY / MEDIA CENTER / COMPUTER LAB		SMALL GROUP
	MUSIC & ART		GENERAL CLASSROOMS
	CTE / APPLIED ARTS		SCIENCE CLASSROOMS
	ADMINISTRATION		SPECIAL ED CLASSROOMS
	STUDENT SERVICES		CIRCULATION
	GYMNASIUM & FITNESS		SERVICE AREAS
	FOOD SERVICE		PHASE II WORK



2ND FLOOR ADDITION:
8,300 SF
 3 SPECIAL ED CLASSROOMS
 4 INTERVENTION SPACES
 MOTHER'S ROOM

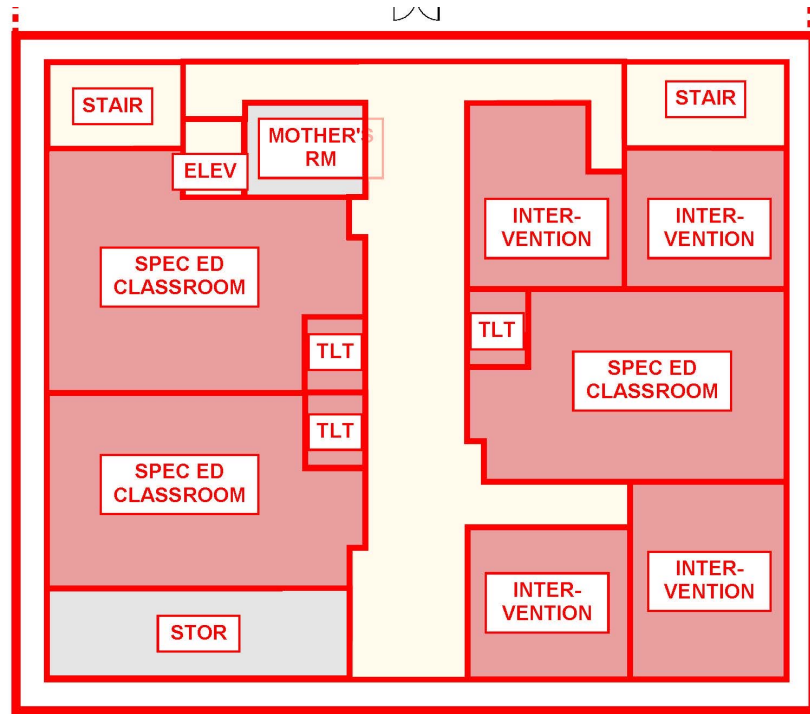
GENERAL UPDATES: FIELD
 NEW CARPETING, CASEWORK, LIGHTING, CEILINGS, AND PAINT IN CLASSROOMS
 NEW CARPETING IN HALLWAYS
 HVAC STUDY



FIELD ELEMENTARY

LEVEL 1 FLOOR PLAN
 2024-03-08





2ND FLOOR ADDITION:
8,300 SF
3 SPECIAL ED CLASSROOMS
4 INTERVENTION SPACES
MOTHER'S ROOM

Student Support Services & Special Education





Franklin Elementary School



- **Health, Safety & Security Upgrades**

- Interior doors & frames
- Railings
- HVAC system
- ADA playground & surface

- **Classroom Modernization**

- Spaces for special education and multilingual learners
- Offices for Social workers, psychologists, speech pathologists
- Life skills classroom area

- **Mechanical/Infrastructure Improvements**

- Downspouts
- Masonry
- LED lighting across building
- Plumbing systems
- Casework across building





LEGEND			
	LIBRARY / MEDIA CENTER / COMPUTER LAB		SMALL GROUP
	MUSIC & ART		GENERAL CLASSROOMS
	CTE / APPLIED ARTS		SCIENCE CLASSROOMS
	ADMINISTRATION		SPECIAL ED CLASSROOMS
	STUDENT SERVICES		CIRCULATION
	GYMNASIUM & FITNESS		SERVICE AREAS
	FOOD SERVICE		PHASE II WORK

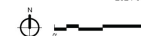


GENERAL UPDATES: FRANKLIN
 NEW CARPETING, CASEWORK, LIGHTING, CEILINGS, AND PAINT IN CLASSROOMS
 NEW CARPETING IN HALLWAYS
 NEW MOTHER'S ROOM
 REPLACE CHILLER
 REPLACE HVAC CONTROLS



FRANKLIN ELEMENTARY

FLOOR PLAN - LEVEL 1
 2024-03-09





LEGEND			
	LIBRARY / MEDIA CENTER / COMPUTER LAB		SMALL GROUP
	MUSIC & ART		GENERAL CLASSROOMS
	CTE / APPLIED ARTS		SCIENCE CLASSROOMS
	ADMINISTRATION		SPECIAL ED CLASSROOMS
	STUDENT SERVICES		CIRCULATION
	GYMNASIUM & FITNESS		SERVICE AREAS
	FOOD SERVICE		PHASE II WORK



GENERAL UPDATES: FRANKLIN

NEW CARPETING, CASEWORK, LIGHTING, CEILINGS, AND PAINT IN CLASSROOMS

NEW CARPETING IN HALLWAYS

NEW MOTHER'S ROOM

REPLACE CHILLER

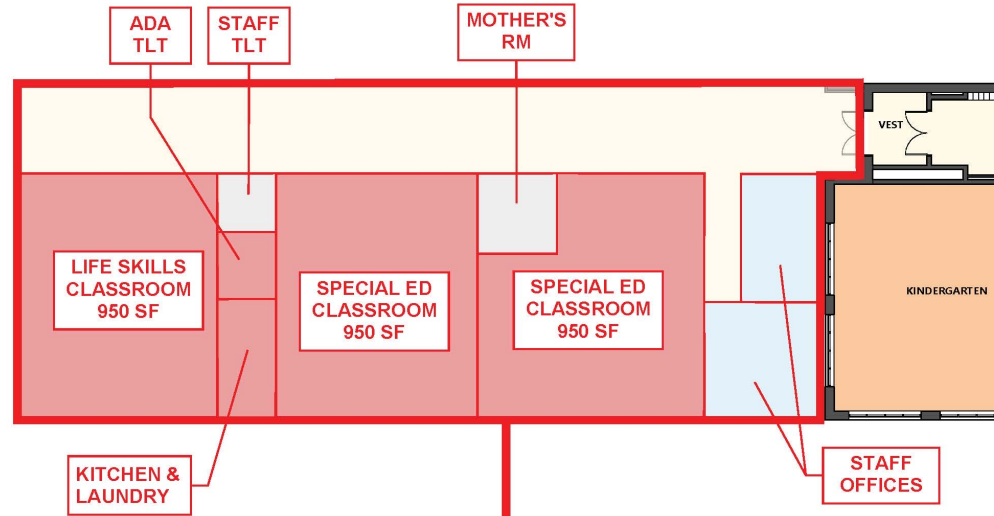
REPLACE HVAC CONTROLS



FRANKLIN ELEMENTARY

FLOOR PLAN - LEVEL 1
2024-03-09





ADDITION: 6,000 SF

SINGLE STORY

1 LIFE SKILLS CLASSROOM

2 SPECIAL ED CLASSROOMS

MOTHER'S ROOM

STAFF OFFICES

STAFF TOILET



Roosevelt Elementary School

- **Health, Safety & Security Upgrades**

- Interior doors & frames
- Railings
- HVAC system
- ADA playground & surface

- **Mechanical/Infrastructure Improvements**

- Major roof replacement
- Downspouts
- Masonry
- LED lighting across building
- Plumbing systems
- Casework





Washington Elementary School



- **Health, Safety & Security Upgrades**

- Interior doors & frames
- Railings
- HVAC
- ADA playground & surface

- **Classroom Modernization**

- New ADA bathroom allowing self-contained Autism program to move to new space

- **Mechanical/Infrastructure Improvements**

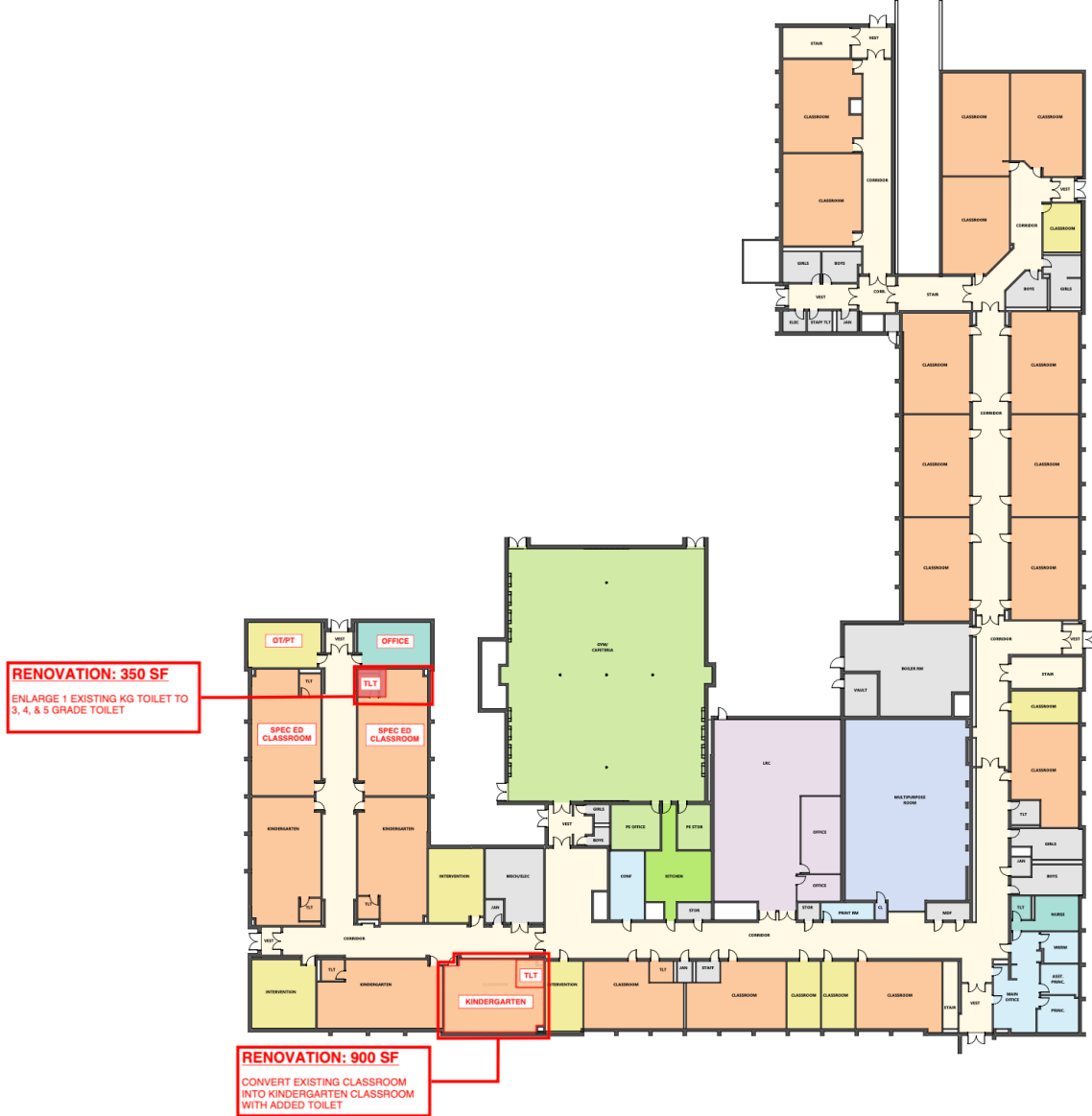
- Major roof replacement
- Masonry
- Lighting, Plumbing, Flooring Upgrades
- LED lighting across building
- Generator
- Plumbing systems
- Casework





LEGEND

LIBRARY / MEDIA CENTER / COMPUTER LAB	SMALL GROUP
MUSIC & ART	GENERAL CLASSROOMS
CTE / APPLIED ARTS	SCIENCE CLASSROOMS
ADMINISTRATION	SPECIAL ED CLASSROOMS
STUDENT SERVICES	CIRCULATION
GYMNASIUM & FITNESS	SERVICE AREAS
FOOD SERVICE	PHASE II WORK

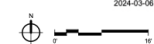


GENERAL UPDATES: WASHINGTON
NEW CARPETING, CASEWORK, LIGHTING, CEILINGS, AND PAINT IN CLASSROOMS
NEW CARPETING IN HALLWAYS
HVAC REPLACEMENT



WASHINGTON ELEMENTARY

LEVEL 1 FLOOR PLAN
2024-03-06



Financial Impact

Referendum Options	\$90 Million	\$95 Million	\$100 Million
Estimated Tax Increase			
\$350,000 Homeowner	\$309/year	\$326/year	\$343/year
\$500,000 Homeowner	\$455/year	\$481/year	\$506/year
\$750,000 Homeowner	\$700/year	\$738/year	\$778/year

Home Value Analysis

Market Values	District Percentage Breakdown
Homes less than \$500,000	70%
Homes \$500,000-\$749,000	21.90%
Homes \$750,000-\$999,999	6.33%
Homes more than \$1,000,000	1.77%

QUICK BREAK

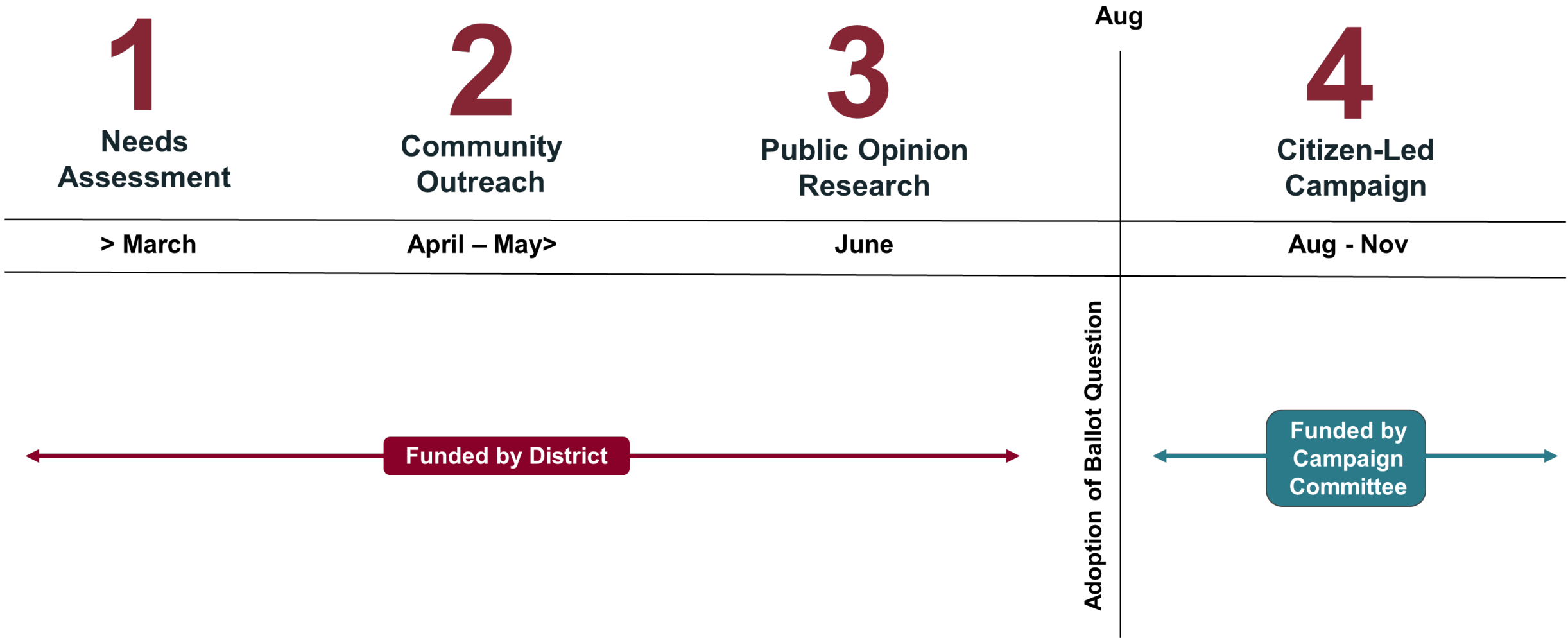
Public Engagement Timeline

Paul A. Hanley
Managing Director
Beyond Your Base

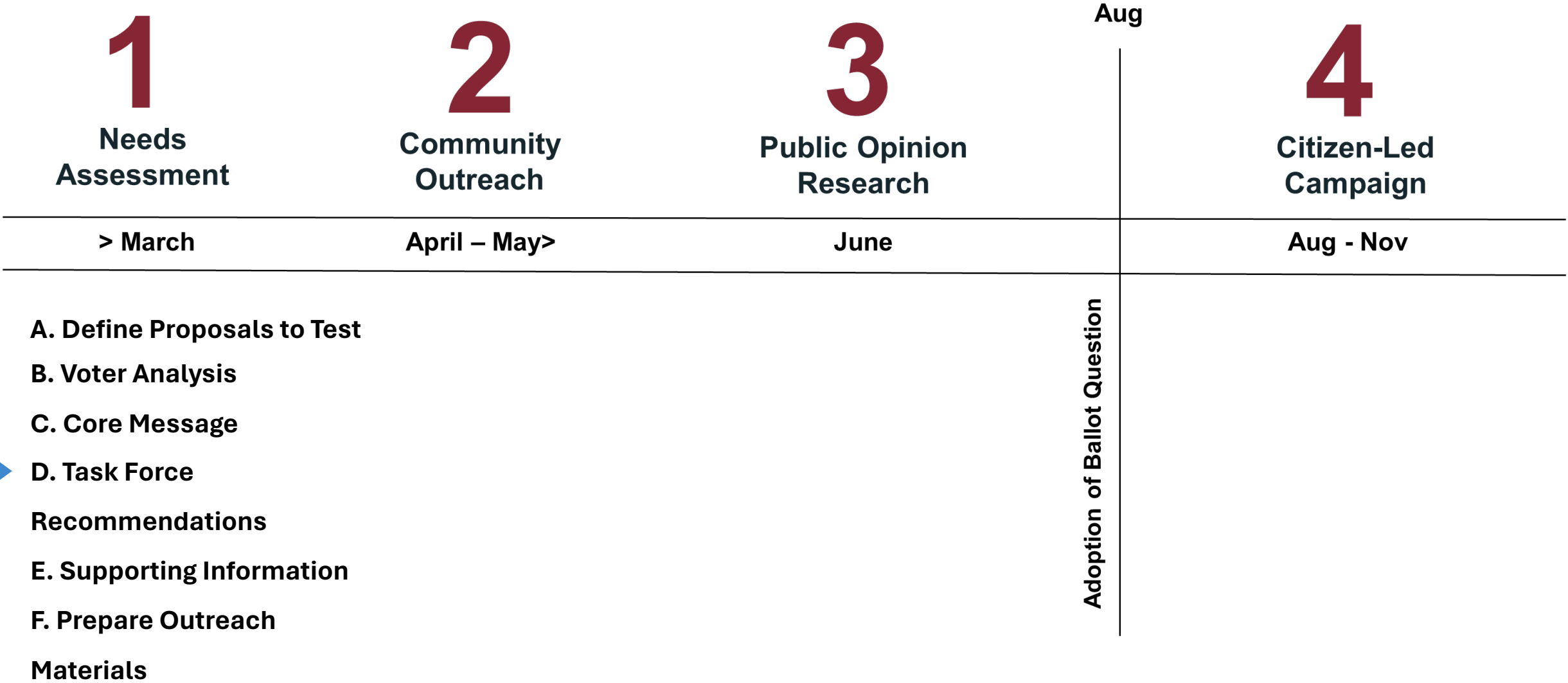
• PARK RIDGE - NILES •
64
SCHOOLS • SCHOOL DISTRICT 64 •



Public Engagement Timeline



Public Engagement Timeline



Public Engagement Timeline

<h1>1</h1> <p>Needs Assessment</p>	<h1>2</h1> <p>Community Outreach</p>	<h1>3</h1> <p>Public Opinion Research</p>	<p>Aug</p> <h1>4</h1> <p>Citizen-Led Campaign</p>
<p>> March</p>	<p>April – May></p>	<p>June</p>	<p>Aug - Nov</p>
<p>A. Board/Staff/Parents (Ongoing) B. Outreach Meetings/Presentations C. Direct Mailers D. Informational Videos E. Earned Media F. Website/Social Media/Digital Ads G. Existing Communication Channels</p>			<p>Adoption of Ballot Question</p>

Public Engagement Timeline

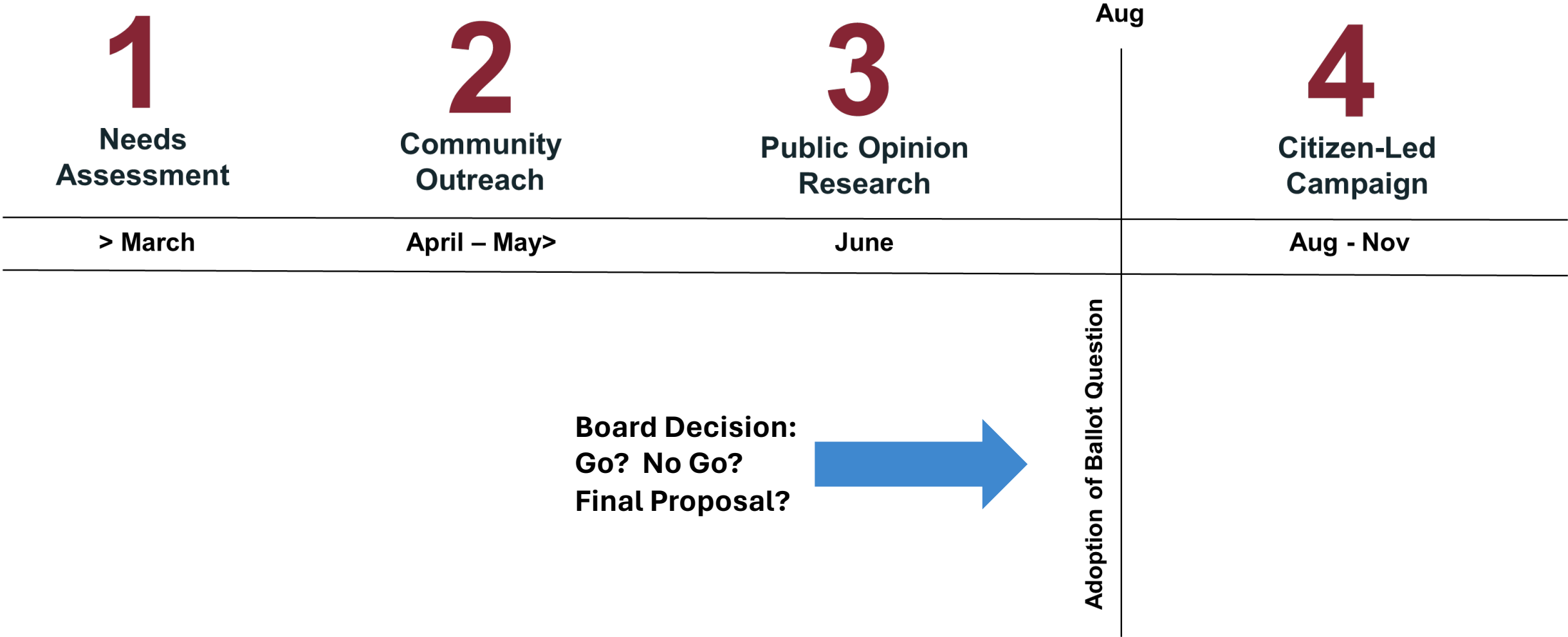
<h1>1</h1> <p>Needs Assessment</p> <p>> March</p>	<h1>2</h1> <p>Community Outreach</p> <p>April – May></p>	<h1>3</h1> <p>Public Opinion Research</p> <p>June</p>	<p>Aug</p> <h1>4</h1> <p>Citizen-Led Campaign</p> <p>Aug - Nov</p>
---	--	--	---

- A. Hybrid Poll to Test...**
- ✓ **Ballot question**
 - ✓ **Parts of proposal**
 - ✓ **Tax sensitivity**
 - ✓ **Trust**
 - ✓ **Arguments for and against**
 - ✓ **Ballot question (informed)**
 - ✓ **Demographics**

Adoption of Ballot Question



Public Engagement Timeline



Public Engagement Timeline

<h1>1</h1> <p>Needs Assessment</p> <p>> March</p>	<h1>2</h1> <p>Community Outreach</p> <p>April – May></p>	<h1>3</h1> <p>Public Opinion Research</p> <p>June</p>	<p>Aug</p> <h1>4</h1> <p>Citizen-Led Campaign</p> <p>Aug - Nov</p>
---	--	--	---



- A. Organization
- B. Fundraising
- C. Supporter Database
- D. Community Events
- E. Presentations
- F. Signage
- G. Website
- G. Direct Mail
- H. Social Media
- I. Canvassing
- J. Letters to Editor
- K. Print/Digital Ads
- L. Get Out the Vote



Sampling of other districts that have been through the four-phase process...



And your park district in 2022!



Breakout Groups

Paul A. Hanley
Managing Director
Beyond Your Base



Breakout Group Instructions

- Pick a recording secretary at your table who will report back to the full committee
- Watch the clock and get through all of the questions
- If you have a question, we are here to help

Breakout Group Questions

1. Do you agree with the size and composition of the proposed bond referendum to be shared and tested this spring/summer? If not, how would you modify the proposal?
2. Are there specific messages—for and against the proposed referendum—that you believe will resonate with voters?
3. What additional information do you think taxpayers will want to make an informed decision on the possible bond referendum?

Final Recommendations



Staying Engaged

Dr. Denise Pearl
President
District 64 Board of Education

Gareth Kennedy
Chair, Facilities & Finance Committee
District 64 Board of Education



Your continued involvement is invaluable

- Keep your ear to the ground
- Share questions and concerns with our team at: 2024proposal@d64.org
- Guide residents to online resources (d64.org/2024proposal) or district leadership
- Ongoing myth-busting
- Spread the message with your community connections