



Park Ridge–Niles School District 64



PARK RIDGE-NILES
SCHOOL DISTRICT 64



Five-Year Updated Capital Plan
Progress Snapshot – 6.15.2023



HIGHEST PRIORITIES



High-Level list of largest priorities:

Lincoln Middle School (\$14.7 – \$18.0M OVER 5 YEARS)

- Site storm water management improvements and related paving
- Classroom security doors and hardware + exterior doors replacement
- HVAC system replacement
- Comprehensive lockers replacement
- FF&E (lunch tables) + select finishes (carpet, ceilings) replacement

Roosevelt Elementary School (\$7.4 – \$9.0M OVER 5 YEARS)

- Classroom security doors and hardware + exterior doors replacement
- Comprehensive lockers replacement at upper floors
- Gym floor (poured urethane) replacement
- FF&E (lunch tables) + select finishes (carpet, ceilings) replacement
- Fire alarm system devices replacement
- Playground equipment replacement and related improvements

HIGHEST PRIORITIES



High-Level list of largest priorities:

Washington Elementary School (\$8.0 – \$9.8M OVER 5 YEARS)

- Classroom security doors and hardware + exterior doors replacement
- Comprehensive lockers replacement
- Gym floor (poured urethane) replacement
- FF&E (lunch tables) + select finishes (carpet, ceilings) replacement

Franklin Elementary School (\$5.0 – \$6.0M OVER 5 YEARS)

- Classroom security doors and hardware + exterior doors replacement
- Comprehensive lockers replacement
- Gym floor (poured urethane) replacement
- FF&E (lunch tables) + select finishes (carpet, ceilings) replacement
- Fire alarm system devices replacement
- Playground equipment replacement and related improvements

HIGHEST PRIORITIES



High-Level list of largest priorities:

Field Elementary School (\$5.0 – \$6.1M OVER 5 YEARS)

- Classroom security doors and hardware + exterior doors replacement
- Roof – at least one section requires shingle replacement
- Comprehensive lockers replacement
- Gym floor (poured urethane) replacement
- FF&E (lunch tables) + select finishes (carpet, ceilings) replacement
- Playground equipment replacement and related improvements

Carpenter Elementary School (\$4.1 – \$5.1M OVER 5 YEARS)

- Limited classroom security doors and hardware + exterior doors replacement
- Gym floor (poured urethane) replacement
- FF&E (lunch tables) + select finishes (carpet, ceilings) replacement
- Fire alarm system devices replacement
- Playground equipment replacement and related improvements

FUTURE PRIORITIES



High-Level list of largest priorities:

Emerson Middle School (\$4.1. - \$5.0M OVER 5 YEARS)

- FF&E (lunch tables) + Equipment (bleachers) replacement
- Fire alarm system devises and exit signs (ongoing facilities-level replacement)
- Life-span related plumbing elements replacement

Jefferson Early Childhood Center (\$250,000 - \$750,000)

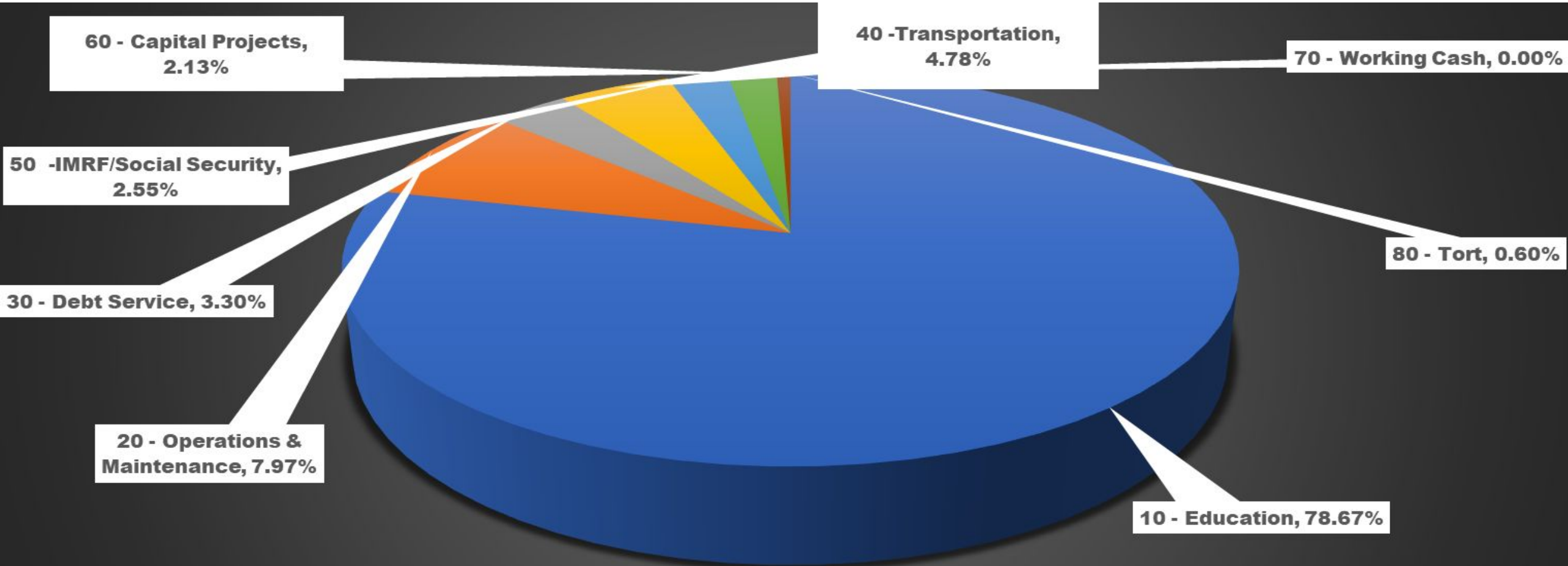
- Limited tuckpointing work identified for improvement
- Playground equipment replacement and related improvements

Board of Education Feedback

May 18 Board of Education Meeting

- Regular maintenance is a priority
- Prioritize future projects based on needs as opposed to wants
- Consider Funding and implications on overall budget
- The District should consider:
 - Baseline functionality
 - Safety and security
 - Student experience
 - Sustainability

Budgeting for FY24

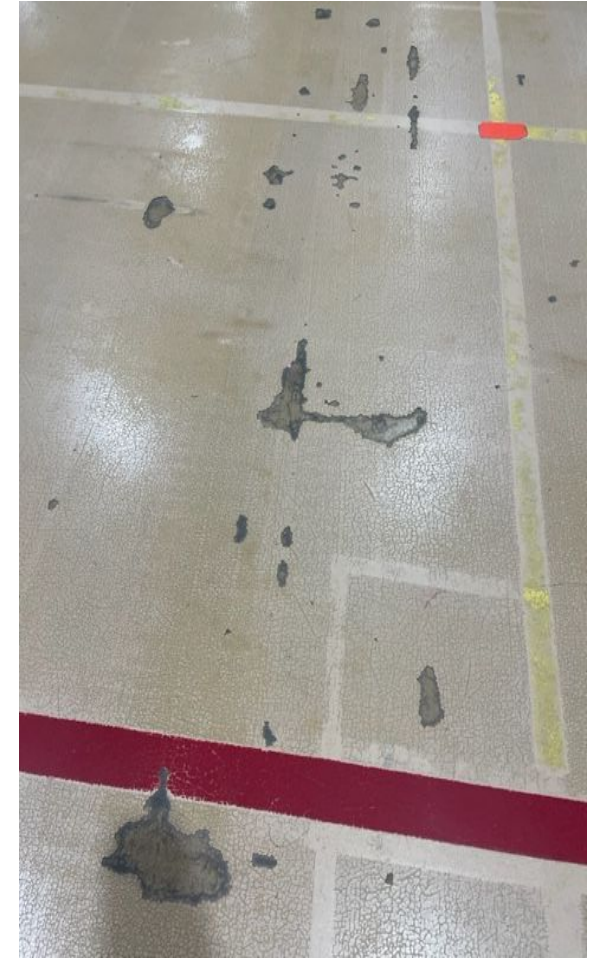


Planning for 2024 Construction

\$2 Million Capital Spending Plan

- Money will be part of the budget
 - No additional money will be borrowed; no new debt
-
- 5 gymnasium floors at Carpenter, Field, Franklin, Roosevelt, Washington
 - Lunch table replacement as part of project
 - Exterior Doors District-wide
 - Carpenter (10 doors)
 - Field (8 doors)
 - Franklin (12 doors)
 - Roosevelt (12 doors) + 1 overhead ramp dock door
 - Washington (12 doors) + 1 overhead ramp dock door
 - Emerson (10 doors)
 - Lincoln (14 doors) + 2 overhead ramp dock doors

Gym Floors



Doors



Planning for 2024 Construction

\$2 Million Capital Spending Plan

- Money will be part of the budget
 - No additional money will be borrowed; no new debt
-
- 5 gymnasium floors at Carpenter, Field, Franklin, Roosevelt, Washington
 - Lunch table replacement as part of project
 - Exterior Doors District-wide
 - Carpenter (10 doors)
 - Field (8 doors)
 - Franklin (12 doors)
 - Roosevelt (12 doors) + 1 overhead ramp dock door
 - Washington (12 doors) + 1 overhead ramp dock door
 - Emerson (10 doors)
 - Lincoln (14 doors) + 2 overhead ramp dock doors

Bidding Considerations

- Comprehensive replacement (compared to partial replacement) is likely to be more cost-effective.
- Acceleration of, and carefully timed approval of, design work will allow for optimal timing to bid, award and authorize summer construction work. It's optimal to bid and award in the fall for the following summer construction season.
- The District is exploring opportunities to realize energy rebates with efficiency and solar energy production.
- Delays in construction mobilization or completion of projects will add to construction cost.